

## PDC Polyclonal Antibody

Catalog No: #28666

Package Size: #28666-1 50ul #28666-2 100ul

Orders: [order@signalwayantibody.com](mailto:order@signalwayantibody.com)Support: [tech@signalwayantibody.com](mailto:tech@signalwayantibody.com)

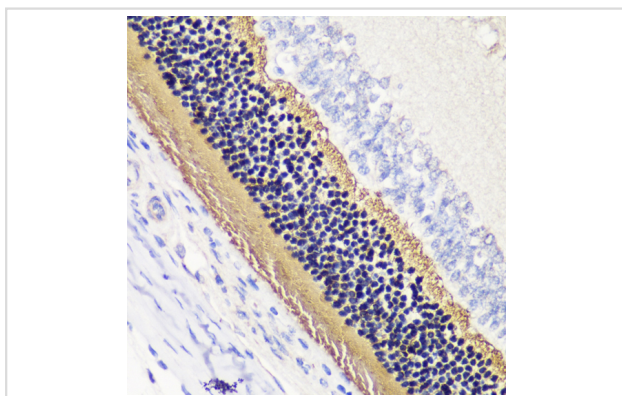
## Description

Product Name	PDC Polyclonal Antibody
Host Species	Rabbit
Clonality	Polyclonal
Isotype	IgG
Purification	Affinity purification
Applications	WB,IHC
Species Reactivity	Mouse,Rat
Immunogen Description	Recombinant fusion protein of human PDC (NP_002588.3).
Other Names	PDC; MEKA; PHD; PhLOP; PhLP; phosducin
Accession No.	Swiss-Prot#:P20941NCBI Gene ID:5132
Uniprot	P20941
GeneID	5132;
Calculated MW	Refer to figures
Formulation	Avoid freeze / thaw cycles. Buffer: PBS with 50% glycerol, pH7.4.
Storage	Store at -20°C

## Application Details

WB□1:500 - 1:2000IHC□1:50 - 1:200

## Images



Immunohistochemistry of paraffin-embedded rat retina using PDC at dilution of 1:200 (40x lens).

## Background

This gene encodes a phosphoprotein, which is located in the outer and inner segments of the rod cells in the retina. This protein may participate in the regulation of visual phototransduction or in the integration of photoreceptor metabolism. It modulates the phototransduction cascade by interacting with the beta and gamma subunits of the retinal G-protein transducin. This gene is a potential candidate gene for retinitis pigmentosa and Usher syndrome type II. Alternatively spliced transcript variants encoding different isoforms have been identified.

---

Note: This product is for in vitro research use only