

PDE6D Polyclonal Antibody

Catalog No: #28696



Package Size: #28696-1 50ul #28696-2 100ul

Orders: order@signalwayantibody.com
Support: tech@signalwayantibody.com

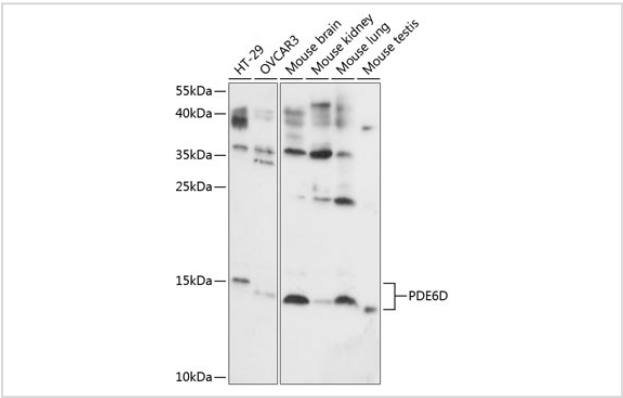
Description

Product Name	PDE6D Polyclonal Antibody
Host Species	Rabbit
Clonality	Polyclonal
Isotype	IgG
Purification	Affinity purification
Applications	WB,IHC,IF
Species Reactivity	Human,Mouse,Rat
Immunogen Description	Recombinant fusion protein of human PDE6D (NP_002592.1).
Other Names	PDE6D; JBTS22; PDED; phosphodiesterase 6D
Accession No.	Swiss-Prot#:O43924NCBI Gene ID:5147
Uniprot	O43924
GeneID	5147;
Calculated MW	14-15kDa
Formulation	Avoid freeze / thaw cycles. Buffer: PBS with 50% glycerol, pH7.4.
Storage	Store at -20°C

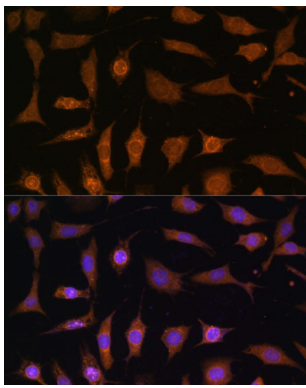
Application Details

WB 1:500 - 1:2000IHC 1:50 - 1:100IF 1:50 - 1:100

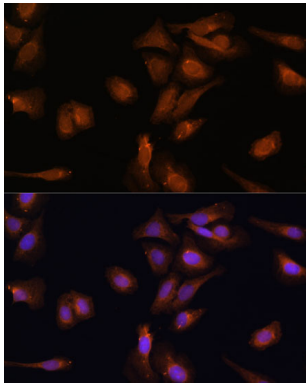
Images



Western blot analysis of extracts of various cell lines, using PDE6D at 1:1000 dilution.



Immunofluorescence analysis of L929 cells using PDE6D Polyclonal at dilution of 1:100 (40x lens). Blue: DAPI for nuclear staining.



Immunofluorescence analysis of U-2 OS cells using PDE6D Polyclonal at dilution of 1:100 (40x lens). Blue: DAPI for nuclear staining.

Background

This gene encodes the delta subunit of rod-specific photoreceptor phosphodiesterase (PDE), a key enzyme in the phototransduction cascade. A similar protein in cow functions in solubilizing membrane-bound PDE. In addition to its role in the PDE complex, the encoded protein is thought to bind to prenyl groups of proteins to target them to subcellular organelles called cilia. Mutations in this gene are associated with Joubert syndrome-22. Alternative splicing results in multiple splice variants.

Note: This product is for in vitro research use only