

## PI15 Polyclonal Antibody

Catalog No: #28742

Package Size: #28742-1 50ul #28742-2 100ul

Orders: [order@signalwayantibody.com](mailto:order@signalwayantibody.com)Support: [tech@signalwayantibody.com](mailto:tech@signalwayantibody.com)

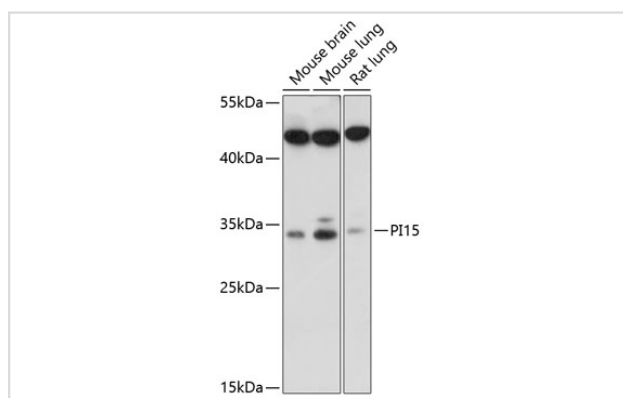
## Description

Product Name	PI15 Polyclonal Antibody
Host Species	Rabbit
Clonality	Polyclonal
Isotype	IgG
Purification	Affinity purification
Applications	WB
Species Reactivity	Mouse,Rat
Immunogen Description	Recombinant fusion protein of human PI15 (NP_056970.1).
Other Names	PI15; CRISP8; P24TI; P25TI; peptidase inhibitor 15
Accession No.	Swiss-Prot#:O43692NCBI Gene ID:51050
Uniprot	O43692
GeneID	51050;
Calculated MW	33kDa
Formulation	Avoid freeze / thaw cycles. Buffer: PBS with 50% glycerol, pH7.4.
Storage	Store at -20°C

## Application Details

WB 1:500 - 1:2000

## Images



Western blot analysis of extracts of various cell lines, using PI15 at 1:1000 dilution.

## Background

This gene encodes a trypsin inhibitor. The protein shares similarity to insect venom allergens, mammalian testis-specific proteins and plant pathogenesis-related proteins. It is frequently expressed in human neuroblastoma and glioblastoma cell lines, and thus may play a role in the central nervous system.

---

Note: This product is for in vitro research use only