

LINS1 Polyclonal Antibody

Catalog No: #28751



Package Size: #28751-1 50ul #28751-2 100ul

Orders: order@signalwayantibody.com
Support: tech@signalwayantibody.com

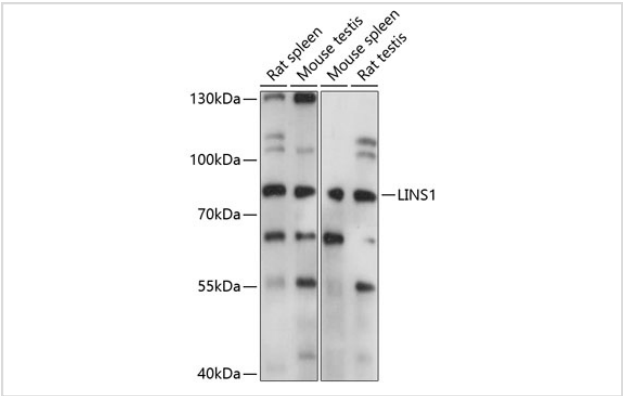
Description

Product Name	LINS1 Polyclonal Antibody
Host Species	Rabbit
Clonality	Polyclonal
Isotype	IgG
Purification	Affinity purification
Applications	WB
Species Reactivity	Mouse,Rat
Immunogen Description	A synthetic peptide of mouse LINS1 (NP_690028.2).
Other Names	LINS1; LINS; MRT27; WINS1; lines homolog 1
Accession No.	Swiss-Prot#:_NCBI Gene ID:72635
GeneID	:72635
Calculated MW	86kDa
Formulation	Avoid freeze / thaw cycles. Buffer: PBS with 50% glycerol, pH7.4.
Storage	Store at -20°C

Application Details

WB 1:500 - 1:2000

Images



Western blot analysis of extracts of various cell lines, using LINS1 at 1:1000 dilution.

Background

The Drosophila segment polarity gene *lin* encodes a protein, *lines*, which plays important roles in development of the epidermis and hindgut. This gene encodes a protein containing a *lines*-like domain. This gene is located on chromosome 15 and clustered with the gene encoding ankyrin repeat and SOCS box-containing protein 7. Alternative splicing results in multiple transcript variants.

Note: This product is for in vitro research use only