

## ACP1 Polyclonal Antibody

Catalog No: #28806

Package Size: #28806-1 50ul #28806-2 100ul

Orders: [order@signalwayantibody.com](mailto:order@signalwayantibody.com)Support: [tech@signalwayantibody.com](mailto:tech@signalwayantibody.com)

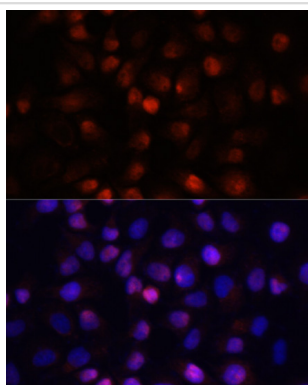
## Description

Product Name	ACP1 Polyclonal Antibody
Host Species	Rabbit
Clonality	Polyclonal
Isotype	IgG
Purification	Affinity purification
Applications	IF
Species Reactivity	Human
Immunogen Description	Recombinant fusion protein of human ACP1 (NP_004291.1).
Other Names	ACP1; HAAP; LMW-PTP; LMWPTP; acid phosphatase 1, soluble
Accession No.	Swiss-Prot#:P24666NCBI Gene ID:52
Uniprot	P24666
GeneID	52;
Formulation	Avoid freeze / thaw cycles. Buffer: PBS with 50% glycerol, pH7.4.
Storage	Store at -20°C

## Application Details

IF 1:50 - 1:200

## Images



Immunofluorescence analysis of HeLa cells using ACP1 at dilution of 1:100 (40x lens). Blue: DAPI for nuclear staining.

## Background

The product of this gene belongs to the phosphotyrosine protein phosphatase family of proteins. It functions as an acid phosphatase and a protein tyrosine phosphatase by hydrolyzing protein tyrosine phosphate to protein tyrosine and orthophosphate. This enzyme also hydrolyzes orthophosphoric monoesters to alcohol and orthophosphate. This gene is genetically polymorphic, and three common alleles segregating at the corresponding locus give rise to six phenotypes. Each allele appears to encode at least two electrophoretically different isozymes, Bf and Bs, which are produced in allele-specific ratios. Multiple alternatively spliced transcript variants encoding distinct isoforms have been identified for this gene.

---

Note: This product is for in vitro research use only