

CCNA2 Polyclonal Antibody

Catalog No: #28807

Package Size: #28807-1 50ul #28807-2 100ul

Orders: order@signalwayantibody.comSupport: tech@signalwayantibody.com

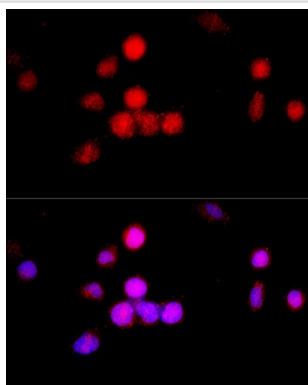
Description

Product Name	CCNA2 Polyclonal Antibody
Host Species	Rabbit
Clonality	Polyclonal
Isotype	IgG
Purification	Affinity purification
Applications	IF
Species Reactivity	Human
Immunogen Description	Recombinant fusion protein of human CCNA2 (NP_001228.1).
Other Names	CCNA2; CCN1; CCNA; cyclin-A2
Accession No.	Swiss-Prot#:P20248NCBI Gene ID:890
Uniprot	P20248
GeneID	890;
Calculated MW	Refer to figures
Formulation	Avoid freeze / thaw cycles. Buffer: PBS with 50% glycerol, pH7.4.
Storage	Store at -20°C

Application Details

IF 1:50 - 1:200

Images



Immunofluorescence analysis of 293T cells using CCNA2 at dilution of 1:100 (40x lens). Blue: DAPI for nuclear staining.

Background

The protein encoded by this gene belongs to the highly conserved cyclin family, whose members are characterized by a dramatic periodicity in protein abundance through the cell cycle. Cyclins function as regulators of CDK kinases. Different cyclins exhibit distinct expression and degradation patterns which contribute to the temporal coordination of each mitotic event. In contrast to cyclin A1, which is present only in germ cells, this cyclin is expressed in all tissues tested. This cyclin binds and activates CDC2 or CDK2 kinases, and thus promotes both cell cycle G1/S and G2/M transitions.

Note: This product is for in vitro research use only