

# CHKA Polyclonal Antibody

Catalog No: #28809



Package Size: #28809-1 50ul #28809-2 100ul

Orders: [order@signalwayantibody.com](mailto:order@signalwayantibody.com)  
Support: [tech@signalwayantibody.com](mailto:tech@signalwayantibody.com)

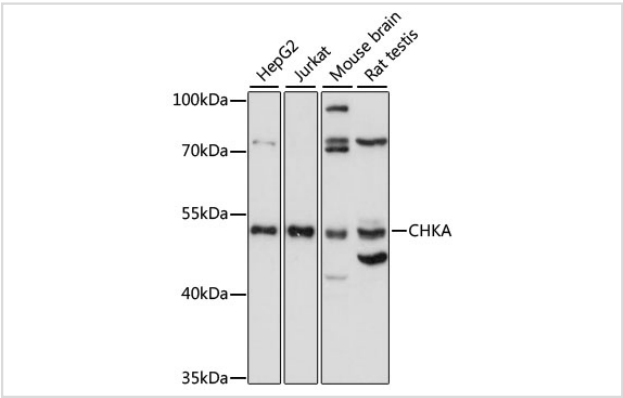
## Description

Product Name	CHKA Polyclonal Antibody
Host Species	Rabbit
Clonality	Polyclonal
Isotype	IgG
Purification	Affinity purification
Applications	WB
Species Reactivity	Human,Mouse,Rat
Immunogen Description	Recombinant fusion protein of human CHKA (NP_001268.2).
Other Names	CHKA; CHK; CK; CKI; EK; choline kinase alpha
Accession No.	Swiss-Prot#:P35790NCBI Gene ID:1119
Uniprot	P35790
GeneID	1119;
Calculated MW	52kDa
Formulation	Avoid freeze / thaw cycles. Buffer: PBS with 50% glycerol, pH7.4.
Storage	Store at -20°C

## Application Details

WB 1:500 - 1:2000

## Images



Western blot analysis of extracts of various cell lines, using CHKA at 1:1000 dilution.

## Background

The major pathway for the biosynthesis of phosphatidylcholine occurs via the CDP-choline pathway. The protein encoded by this gene is the initial enzyme in the sequence and may play a regulatory role. The encoded protein also catalyzes the phosphorylation of ethanolamine. Two transcript variants encoding different isoforms have been found for this gene.

---

Note: This product is for in vitro research use only