

LTB4R Polyclonal Antibody

Catalog No: #28811

Package Size: #28811-1 50ul #28811-2 100ul

Orders: order@signalwayantibody.comSupport: tech@signalwayantibody.com

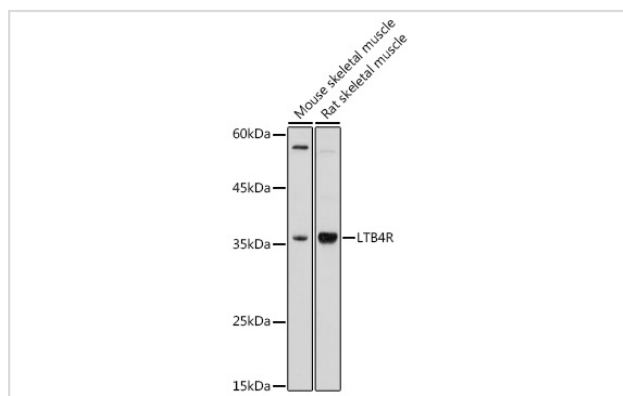
Description

Product Name	LTB4R Polyclonal Antibody
Host Species	Rabbit
Clonality	Polyclonal
Isotype	IgG
Purification	Affinity purification
Applications	WB
Species Reactivity	Mouse,Rat
Immunogen Description	A synthetic peptide of human LTB4R (NP_858043.1).
Other Names	LTB4R;BLT1;BLTR;CMKRL1;GPR16;LTB4R1;LTBR1;P2RY7;P2Y7
Accession No.	Uniprot:Q15722GeneID:1241
Uniprot	Q15722
GeneID	1241
Calculated MW	37kDa
SDS-PAGE MW	38KDa
Formulation	PBS with 0.02% sodium azide,50% glycerol,pH7.3.
Storage	Store at -20°C. Avoid freeze / thaw cycles.

Application Details

WB □ 1:500 - 1:2000

Images



Western blot analysis of extracts of various cell lines, using LTB4R antibody.

Background

Receptor for extracellular ATP > UTP and ADP. The activity of this receptor is mediated by G proteins which activate a phosphatidylinositol-calcium second messenger system. May be the cardiac P2Y receptor involved in the regulation of cardiac muscle contraction through modulation of L-type calcium currents. Is a receptor for leukotriene B4, a potent chemoattractant involved in inflammation and immune response.

Note: This product is for in vitro research use only