

## CYP2J2 Polyclonal Antibody

Catalog No: #28812

Package Size: #28812-1 50ul #28812-2 100ul

Orders: [order@signalwayantibody.com](mailto:order@signalwayantibody.com)Support: [tech@signalwayantibody.com](mailto:tech@signalwayantibody.com)

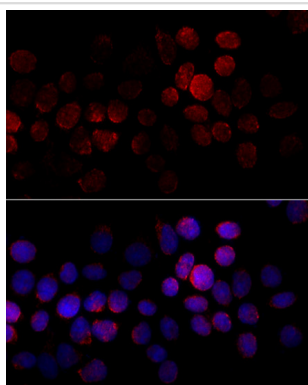
## Description

Product Name	CYP2J2 Polyclonal Antibody
Host Species	Rabbit
Clonality	Polyclonal
Isotype	IgG
Purification	Affinity purification
Applications	IF
Species Reactivity	Human
Immunogen Description	A synthetic peptide of human CYP2J2 (NP_000766.2).
Other Names	CYP2J2; CPJ2; CYP11J2; cytochrome P450 2J2
Accession No.	Swiss-Prot#:P51589NCBI Gene ID:1573
Uniprot	P51589
GeneID	1573;
Formulation	Avoid freeze / thaw cycles. Buffer: PBS with 50% glycerol, pH7.4.
Storage	Store at -20°C

## Application Details

IF 1:50 - 1:200

## Images



Immunofluorescence analysis of HeLa cells using CYP2J2 at dilution of 1:100 (40x lens). Blue: DAPI for nuclear staining.

## Background

This gene encodes a member of the cytochrome P450 superfamily of enzymes. The cytochrome P450 proteins are monooxygenases which catalyze many reactions involved in drug metabolism and synthesis of cholesterol, steroids and other lipids. This protein localizes to the endoplasmic reticulum and is thought to be the predominant enzyme responsible for epoxidation of endogenous arachidonic acid in cardiac tissue. Multiple transcript variants have been found for this gene.

---

Note: This product is for in vitro research use only