

RABIF Polyclonal Antibody

Catalog No: #28824



Package Size: #28824-1 50ul #28824-2 100ul

Orders: order@signalwayantibody.com
Support: tech@signalwayantibody.com

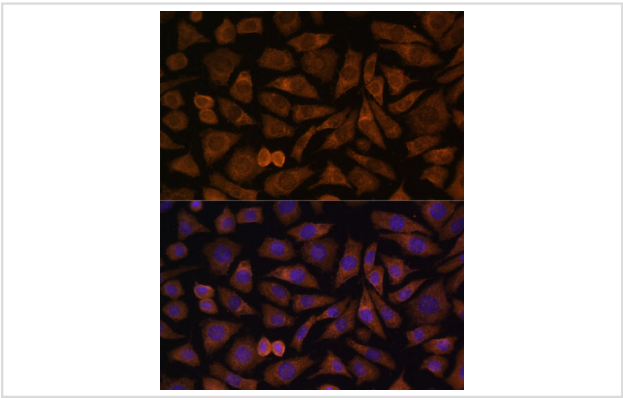
Description

Product Name	RABIF Polyclonal Antibody
Host Species	Rabbit
Clonality	Polyclonal
Isotype	IgG
Purification	Affinity purification
Applications	WB,IF
Species Reactivity	Human,Mouse,Rat
Immunogen Description	Recombinant fusion protein of human RABIF (NP_002862.2).
Other Names	RABIF; MSS4; RASGFR3; RASGRF3; RAB interacting factor
Accession No.	Swiss-Prot#:P47224NCBI Gene ID:5877
Uniprot	P47224
GeneID	5877;
Calculated MW	14kDa
Formulation	Avoid freeze / thaw cycles. Buffer: PBS with 50% glycerol, pH7.4.
Storage	Store at -20°C

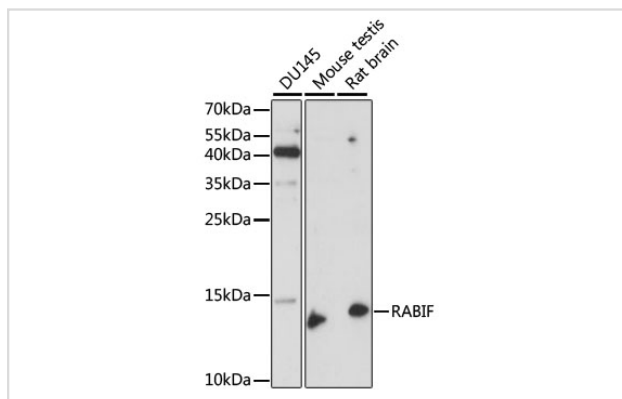
Application Details

WB1:500 - 1:2000IF1:50 - 1:100

Images



Immunofluorescence analysis of L929 cells using RABIF Polyclonal at dilution of 1:100 (40x lens). Blue: DAPI for nuclear staining.



Western blot analysis of extracts of various cell lines, using RABIF at 1:1000 dilution.

Background

This gene encodes a member of the SCE4/YPT1/RAB family of small GTP-binding proteins that are involved in the regulation of intracellular vesicular transport. This protein stimulates GTP-GDP exchange in SEC4, and to a lesser extent in YPT1 and RAB3A, and may play a general role in vesicular transport.

Note: This product is for in vitro research use only