

RHD Polyclonal Antibody

Catalog No: #28826

Package Size: #28826-1 50ul #28826-2 100ul

Orders: order@signalwayantibody.comSupport: tech@signalwayantibody.com

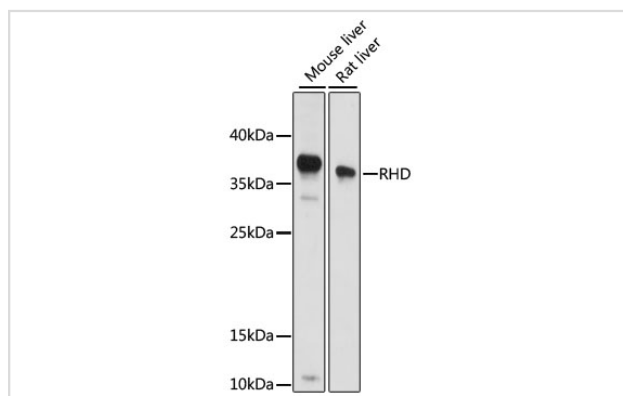
Description

Product Name	RHD Polyclonal Antibody
Host Species	Rabbit
Clonality	Polyclonal
Isotype	IgG
Purification	Affinity purification
Applications	WB
Species Reactivity	Mouse,Rat
Immunogen Description	A synthetic peptide of human RHD (NP_001121163.1).
Other Names	RHD; CD240D; DIIIc; RH; RH30; RHCED; RHDVA(TT); RHDel; RHPII; RHXIII; Rh4; RhDCw; RhII; RhK562-II; RhPI; Rh blood group D antigen
Accession No.	Swiss-Prot#:Q02161NCBI Gene ID:6007
Uniprot	Q02161
GeneID	6007;
Calculated MW	36kDa
Formulation	Avoid freeze / thaw cycles. Buffer: PBS with 50% glycerol, pH7.4.
Storage	Store at -20°C

Application Details

WB□1:500 - 1:2000

Images



Western blot analysis of extracts of various cell lines, using RHD at 1:1000 dilution.

Background

The Rh blood group system is the second most clinically significant of the blood groups, second only to ABO. It is also the most polymorphic of the blood groups, with variations due to deletions, gene conversions, and missense mutations. The Rh blood group includes this gene, which encodes the RhD protein, and a second gene that encodes both the RhC and RhE antigens on a single polypeptide. The two genes, and a third unrelated gene,

are found in a cluster on chromosome 1. The classification of Rh-positive and Rh-negative individuals is determined by the presence or absence of the highly immunogenic RhD protein on the surface of erythrocytes. Multiple transcript variants encoding different isoforms have been found for this gene.

Note: This product is for in vitro research use only