

RHO Polyclonal Antibody

Catalog No: #28827



Package Size: #28827-1 50ul #28827-2 100ul

Orders: [order@signalwayantibody.com](mailto:order@signalwayantibody.com)  
Support: [tech@signalwayantibody.com](mailto:tech@signalwayantibody.com)

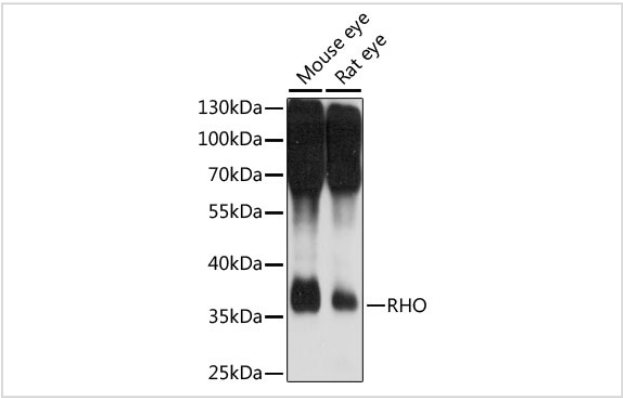
Description

Product Name	RHO Polyclonal Antibody
Host Species	Rabbit
Clonality	Polyclonal
Isotype	IgG
Purification	Affinity purification
Applications	WB,IHC
Species Reactivity	Mouse,Rat
Immunogen Description	A synthetic synthetic peptide of human RHO (NP_000530.1).
Other Names	RHO; CSNBAD1; OPN2; RP4; rhodopsin
Accession No.	Swiss-Prot#:P08100NCBI Gene ID:6010
Uniprot	P08100
GeneID	6010;
Calculated MW	39kDa
Formulation	Avoid freeze / thaw cycles. Buffer: PBS with 50% glycerol, pH7.4.
Storage	Store at -20°C

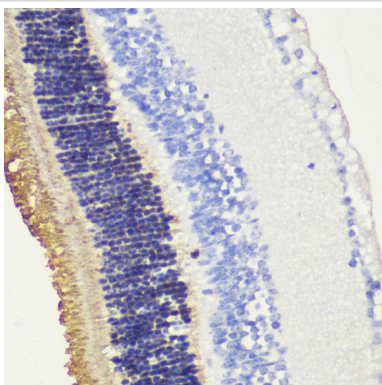
Application Details

WB 1:500 - 1:2000IHC 1:50 - 1:200

Images



Western blot analysis of extracts of various cell lines, using RHO at 1:1000 dilution.



Immunohistochemistry of paraffin-embedded mouse retina using RHO at dilution of 1:200 (40x lens).

## Background

Retinitis pigmentosa is an inherited progressive disease which is a major cause of blindness in western communities. It can be inherited as an autosomal dominant, autosomal recessive, or X-linked recessive disorder. In the autosomal dominant form, which comprises about 25% of total cases, approximately 30% of families have mutations in the gene encoding the rod photoreceptor-specific protein rhodopsin. This is the transmembrane protein which, when photoexcited, initiates the visual transduction cascade. Defects in this gene are also one of the causes of congenital stationary night blindness.

Note: This product is for in vitro research use only