

RNASEH2A Polyclonal Antibody

Catalog No: #28836



Package Size: #28836-1 50ul #28836-2 100ul

Orders: order@signalwayantibody.com
Support: tech@signalwayantibody.com

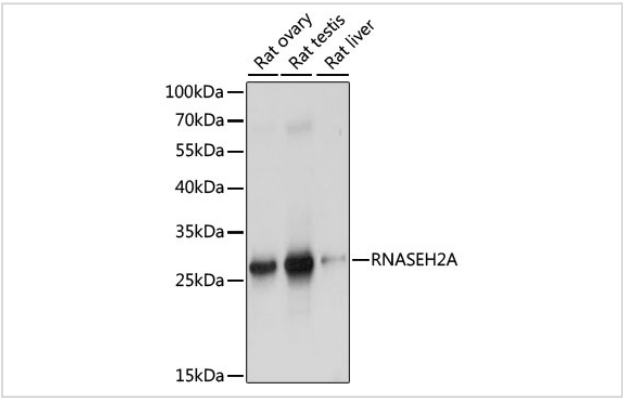
Description

Product Name	RNASEH2A Polyclonal Antibody
Host Species	Rabbit
Clonality	Polyclonal
Isotype	IgG
Purification	Affinity purification
Applications	WB,IF
Species Reactivity	Human,Rat
Immunogen Description	Recombinant fusion protein of human RNASEH2A (NP_006388.2).
Other Names	RNASEH2A; AGS4; JUNB; RNASEH1; RNH1A; RNHL; ribonuclease H2 subunit A
Accession No.	Swiss-Prot#:O75792NCBI Gene ID:10535
Uniprot	O75792
GeneID	10535;
Calculated MW	33kDa
Formulation	Avoid freeze / thaw cycles. Buffer: PBS with 50% glycerol, pH7.4.
Storage	Store at -20°C

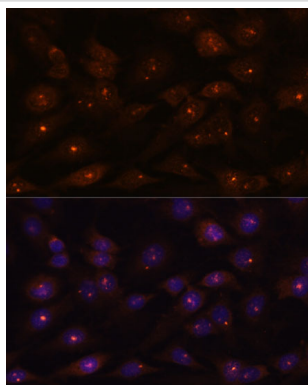
Application Details

WB 1:500 - 1:2000IF 1:50 - 1:200

Images



Western blot analysis of extracts of various cell lines, using RNASEH2A at 1:1000 dilution.



Immunofluorescence analysis of C6 cells using RNASEH2A at dilution of 1:100. Blue: DAPI for nuclear staining.

Background

The protein encoded by this gene is a component of the heterotrimeric type II ribonuclease H enzyme (RNaseH2). RNaseH2 is the major source of ribonuclease H activity in mammalian cells and endonucleolytically cleaves ribonucleotides. It is predicted to remove Okazaki fragment RNA primers during lagging strand DNA synthesis and to excise single ribonucleotides from DNA-DNA duplexes. Mutations in this gene cause Aicardi-Goutieres Syndrome (AGS), a an autosomal recessive neurological disorder characterized by progressive microcephaly and psychomotor retardation, intracranial calcifications, elevated levels of interferon-alpha and white blood cells in the cerebrospinal fluid.

Note: This product is for in vitro research use only