

SLC22A7 Polyclonal Antibody

Catalog No: #28837



Package Size: #28837-1 50ul #28837-2 100ul

Orders: order@signalwayantibody.com
Support: tech@signalwayantibody.com

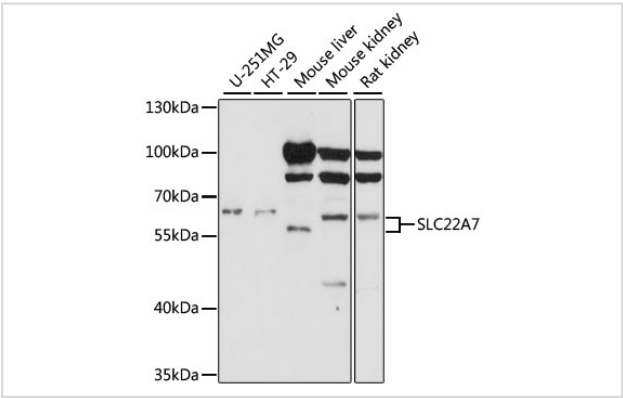
Description

Product Name	SLC22A7 Polyclonal Antibody
Host Species	Rabbit
Clonality	Polyclonal
Isotype	IgG
Purification	Affinity purification
Applications	WB
Species Reactivity	Human,Mouse,Rat
Immunogen Description	Recombinant fusion protein of human SLC22A7 (NP_696961.2).
Other Names	SLC22A7; NLT; OAT2; hOAT11; solute carrier family 22 member 7
Accession No.	Swiss-Prot#:Q9Y694NCBI Gene ID:10864
Uniprot	Q9Y694
GeneID	10864;
Calculated MW	60kDa
Formulation	Avoid freeze / thaw cycles. Buffer: PBS with 50% glycerol, pH7.4.
Storage	Store at -20°C

Application Details

WB 1:500 - 1:2000

Images



Western blot analysis of extracts of various cell lines, using SLC22A7 at 1:1000 dilution.

Background

The protein encoded by this gene is involved in the sodium-independent transport and excretion of organic anions, some of which are potentially toxic. The encoded protein is an integral membrane protein and appears to be localized to the basolateral membrane of the kidney. Alternatively spliced transcript variants encoding different isoforms have been described.

Note: This product is for in vitro research use only