

# RIF1 Polyclonal Antibody

Catalog No: #28853



Package Size: #28853-1 50ul #28853-2 100ul

Orders: [order@signalwayantibody.com](mailto:order@signalwayantibody.com)  
Support: [tech@signalwayantibody.com](mailto:tech@signalwayantibody.com)

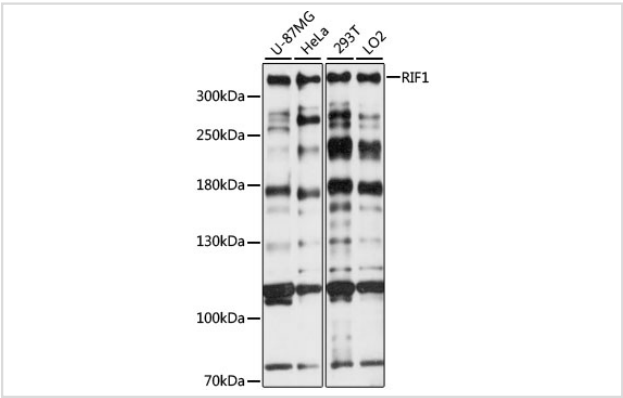
## Description

Product Name	RIF1 Polyclonal Antibody
Host Species	Rabbit
Clonality	Polyclonal
Isotype	IgG
Purification	Affinity purification
Applications	WB
Species Reactivity	Human
Immunogen Description	Recombinant fusion protein of human RIF1 (NP_060621.3).
Other Names	RIF1; telomere-associated protein RIF1
Accession No.	Swiss-Prot#:Q5UIP0NCBI Gene ID:55183
Uniprot	Q5UIP0
GeneID	55183;
Calculated MW	350kDa
Formulation	Avoid freeze / thaw cycles. Buffer: PBS with 50% glycerol, pH7.4.
Storage	Store at -20°C

## Application Details

WB 1:500 - 1:2000

## Images



Western blot analysis of extracts of various cell lines, using RIF1 at 1:1000 dilution.

## Background

This gene encodes a protein that shares homology with the yeast telomere binding protein, Rap1 interacting factor 1. This protein localizes to aberrant telomeres may be involved in DNA repair. Alternate splicing results in multiple transcript variants.

---

Note: This product is for in vitro research use only