

AFM Polyclonal Antibody

Catalog No: #28886

Package Size: #28886-1 50ul #28886-2 100ul

Orders: order@signalwayantibody.comSupport: tech@signalwayantibody.com

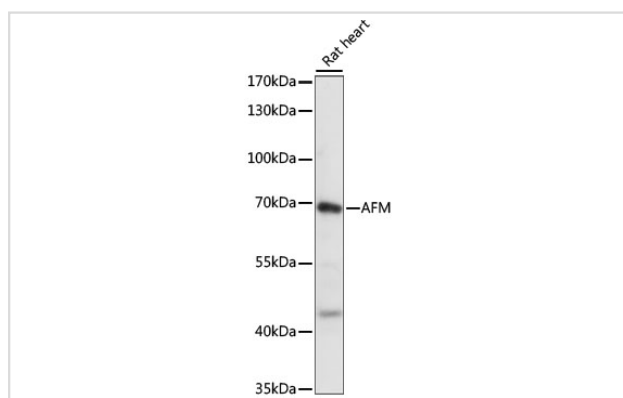
Description

Product Name	AFM Polyclonal Antibody
Host Species	Rabbit
Clonality	Polyclonal
Isotype	IgG
Purification	Affinity purification
Applications	WB
Species Reactivity	Rat
Immunogen Description	Recombinant fusion protein of human AFM (NP_001124.1).
Other Names	AFM; ALB2; ALBA; ALF; afamin
Accession No.	Swiss-Prot#:P43652NCBI Gene ID:173
Uniprot	P43652
GeneID	173;
Calculated MW	69kDa
Formulation	Avoid freeze / thaw cycles. Buffer: PBS with 50% glycerol, pH7.4.
Storage	Store at -20°C

Application Details

WB 1:200 - 1:2000

Images



Western blot analysis of extracts of Rat heart, using AFM at 1:1000 dilution.

Background

This gene is a member of the albumin gene family, which is comprised of four genes that localize to chromosome 4 in a tandem arrangement. These four genes encode structurally-related serum transport proteins that are known to be evolutionarily related. The protein encoded by this gene is regulated developmentally, expressed in the liver and secreted into the bloodstream.

Note: This product is for in vitro research use only