

CLC Polyclonal Antibody

Catalog No: #28892



Package Size: #28892-1 50ul #28892-2 100ul

Orders: order@signalwayantibody.com
Support: tech@signalwayantibody.com

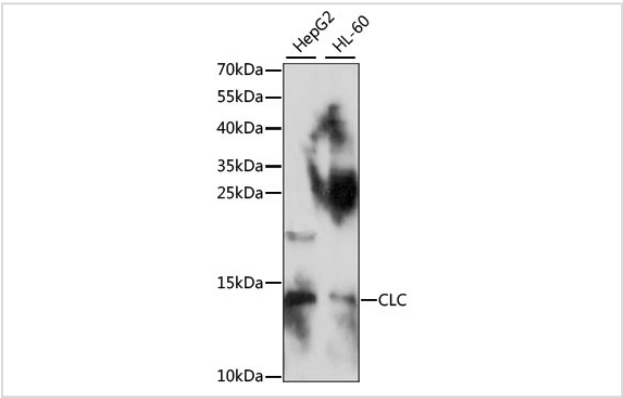
Description

Product Name	CLC Polyclonal Antibody
Host Species	Rabbit
Clonality	Polyclonal
Isotype	IgG
Purification	Affinity purification
Applications	WB
Species Reactivity	Human
Immunogen Description	Recombinant fusion protein of human CLC (NP_001819.2).
Other Names	CLC; GAL10; Gal-10; LGALS10; LGALS10A; LPPL_HUMAN; galectin-10
Accession No.	Swiss-Prot#:Q05315NCBI Gene ID:1178
Uniprot	Q05315
GeneID	1178;
Calculated MW	14kDa
Formulation	Avoid freeze / thaw cycles. Buffer: PBS with 50% glycerol, pH7.4.
Storage	Store at -20°C

Application Details

WB 1:200 - 1:2000

Images



Western blot analysis of extracts of various cell lines, using CLC at 1:1000 dilution.

Background

Lysophospholipases are enzymes that act on biological membranes to regulate the multifunctional lysophospholipids. The protein encoded by this gene is a lysophospholipase expressed in eosinophils and basophils. It hydrolyzes lysophosphatidylcholine to glycerophosphocholine and a free fatty acid. This protein may possess carbohydrate or IgE-binding activities. It is both structurally and functionally related to the galectin family of beta-galactoside binding proteins. It may be associated with inflammation and some myeloid leukemias.

Note: This product is for in vitro research use only