

GUCY1B3 Polyclonal Antibody

Catalog No: #28897



Package Size: #28897-1 50ul #28897-2 100ul

Orders: order@signalwayantibody.com
Support: tech@signalwayantibody.com

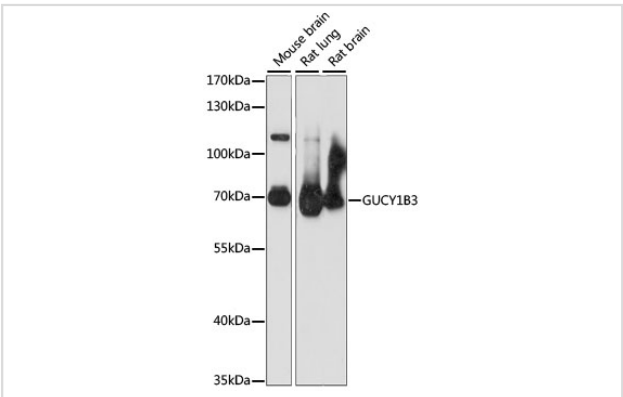
Description

Product Name	GUCY1B3 Polyclonal Antibody
Host Species	Rabbit
Clonality	Polyclonal
Isotype	IgG
Purification	Affinity purification
Applications	WB,IHC
Species Reactivity	Human,Mouse,Rat
Immunogen Description	Recombinant fusion protein of human GUCY1B3 (NP_000848.1).
Other Names	GUCY1B3; GC-S-beta-1; GC-SB3; GUC1B3; GUCB3; GUCSB3; GUCY1B1; guanylate cyclase soluble subunit beta-1
Accession No.	Swiss-Prot#:Q02153NCBI Gene ID:2983
Uniprot	Q02153
GeneID	2983;
Calculated MW	70kDa
Formulation	Avoid freeze / thaw cycles. Buffer: PBS with 50% glycerol, pH7.4.
Storage	Store at -20°C

Application Details

WB 1:200 - 1:2000IHC 1:50 - 1:200

Images



Western blot analysis of extracts of various cell lines, using GUCY1B3 at 1:1000 dilution.

Background

This gene encodes the beta subunit of the soluble guanylate cyclase (sGC), which catalyzes the conversion of GTP (guanosine triphosphate) to cGMP (cyclic guanosine monophosphate). The encoded protein contains an HNOX domain, which serves as a receptor for ligands such as nitric oxide, oxygen and nitrovasodilator drugs. Alternative splicing results in multiple transcript variants.

Note: This product is for in vitro research use only