

NHS Polyclonal Antibody

Catalog No: #28902

Package Size: #28902-1 50ul #28902-2 100ul

Orders: order@signalwayantibody.comSupport: tech@signalwayantibody.com

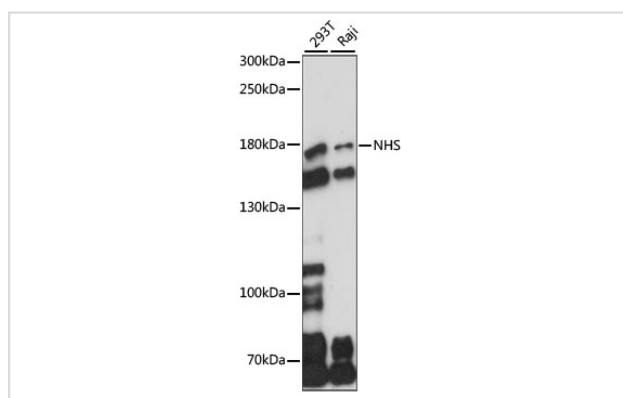
Description

Product Name	NHS Polyclonal Antibody
Host Species	Rabbit
Clonality	Polyclonal
Isotype	IgG
Purification	Affinity purification
Applications	WB
Species Reactivity	Human
Immunogen Description	Recombinant fusion protein of human NHS (NP_938011.1).
Other Names	NHS; CTRCT40; CXN; SCML1; Nance-Horan syndrome protein
Accession No.	Swiss-Prot#:Q6T4R5NCBI Gene ID:4810
Uniprot	Q6T4R5
GeneID	4810;
Calculated MW	179kDa
Formulation	Avoid freeze / thaw cycles. Buffer: PBS with 50% glycerol, pH7.4.
Storage	Store at -20°C

Application Details

WB 1:200 - 1:2000

Images



Western blot analysis of extracts of various cell lines, using NHS at 1:1000 dilution.

Background

This gene encodes a protein containing four conserved nuclear localization signals. The encoded protein functions in eye, tooth, craniofacial and brain development, and it can regulate actin remodeling and cell morphology. Mutations in this gene have been shown to cause Nance-Horan syndrome, and also X-linked cataract-40. Alternatively spliced transcript variants encoding different isoforms have been described for this gene.

Note: This product is for in vitro research use only