

PAN2 Polyclonal Antibody

Catalog No: #28934



Package Size: #28934-1 50ul #28934-2 100ul

Orders: order@signalwayantibody.com
Support: tech@signalwayantibody.com

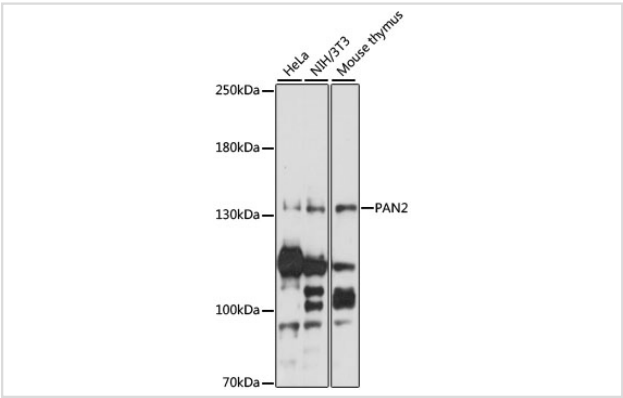
Description

Product Name	PAN2 Polyclonal Antibody
Host Species	Rabbit
Clonality	Polyclonal
Isotype	IgG
Purification	Affinity purification
Applications	WB
Species Reactivity	Human,Mouse
Immunogen Description	Recombinant fusion protein of human PAN2 (NP_001120932.1).
Other Names	PAN2; USP52; PAN2 poly(A) specific ribonuclease subunit
Accession No.	Swiss-Prot#:Q504Q3NCBI Gene ID:9924
Uniprot	Q504Q3
GeneID	9924;
Calculated MW	135kDa
Formulation	Avoid freeze / thaw cycles. Buffer: PBS with 50% glycerol, pH7.4.
Storage	Store at -20°C

Application Details

WB 1:200 - 1:2000

Images



Western blot analysis of extracts of various cell lines, using PAN2 at 1:1000 dilution.

Background

This gene encodes a deadenylase that functions as the catalytic subunit of the polyadenylate binding protein dependent poly(A) nuclease complex. The encoded protein is a magnesium dependent 3' to 5' exoribonuclease that is involved in the degradation of cytoplasmic mRNAs. Alternate splicing results in multiple transcript variants.

Note: This product is for in vitro research use only