

# KLHL41 Polyclonal Antibody

Catalog No: #28941



Package Size: #28941-1 50ul #28941-2 100ul

Orders: [order@signalwayantibody.com](mailto:order@signalwayantibody.com)  
Support: [tech@signalwayantibody.com](mailto:tech@signalwayantibody.com)

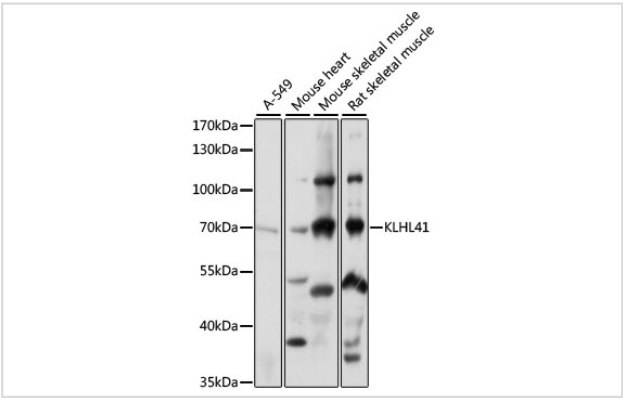
## Description

Product Name	KLHL41 Polyclonal Antibody
Host Species	Rabbit
Clonality	Polyclonal
Isotype	IgG
Purification	Affinity purification
Applications	WB
Species Reactivity	Human,Mouse,Rat
Immunogen Description	Recombinant fusion protein of human KLHL41 (NP_006054.2).
Other Names	KLHL41; KBTBD10; Krp1; SARCOSIN; kelch-like protein 41
Accession No.	Swiss-Prot#:O60662NCBI Gene ID:10324
Uniprot	O60662
GeneID	10324;
Calculated MW	68kDa
Formulation	Avoid freeze / thaw cycles. Buffer: PBS with 50% glycerol, pH7.4.
Storage	Store at -20°C

## Application Details

WB 1:200 - 1:2000

## Images



Western blot analysis of extracts of various cell lines, using KLHL41 at 1:1000 dilution.

## Background

This gene is a member of the kelch-like family. The encoded protein contains a BACK domain, a BTB/POZ domain, and 5 Kelch repeats. This protein is thought to function in skeletal muscle development and maintenance. Mutations in this gene have been associated with nemaline myopathy (NM), a rare congenital muscle disorder.

---

Note: This product is for in vitro research use only