

SRPX2 Polyclonal Antibody

Catalog No: #28966

Package Size: #28966-1 50ul #28966-2 100ul

Orders: order@signalwayantibody.comSupport: tech@signalwayantibody.com

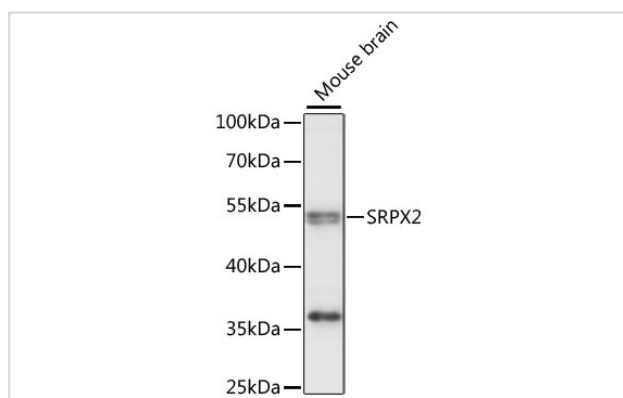
Description

Product Name	SRPX2 Polyclonal Antibody
Host Species	Rabbit
Clonality	Polyclonal
Isotype	IgG
Purification	Affinity purification
Applications	WB
Species Reactivity	Mouse
Immunogen Description	Recombinant fusion protein of human SRPX2 (NP_055282.1).
Other Names	SRPX2; BPP; CBPS; PMGX; RESDX; SRPUL; sushi repeat-containing protein SRPX2
Accession No.	Swiss-Prot#:O60687NCBI Gene ID:27286
Uniprot	O60687
GeneID	27286;
Calculated MW	53kDa
Formulation	Avoid freeze / thaw cycles. Buffer: PBS with 50% glycerol, pH7.4.
Storage	Store at -20°C

Application Details

WB 1:200 - 1:2000

Images



Western blot analysis of extracts of mouse brain, using SRPX2 at 1:1000 dilution.

Background

This gene encodes a secreted protein that contains three sushi repeat motifs. The encoded protein may play a role in the development of speech and language centers in the brain. This protein may also be involved in angiogenesis. Mutations in this gene are the cause of bilateral perisylvian polymicrogyria, rolandic epilepsy, speech dyspraxia and mental retardation.

Note: This product is for in vitro research use only