

# LINS1 Polyclonal Antibody

Catalog No: #28979



Package Size: #28979-1 50ul #28979-2 100ul

Orders: [order@signalwayantibody.com](mailto:order@signalwayantibody.com)  
Support: [tech@signalwayantibody.com](mailto:tech@signalwayantibody.com)

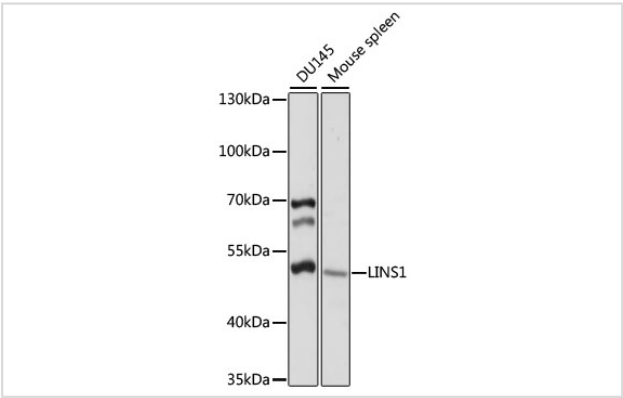
## Description

Product Name	LINS1 Polyclonal Antibody
Host Species	Rabbit
Clonality	Polyclonal
Isotype	IgG
Purification	Affinity purification
Applications	WB
Species Reactivity	Human,Mouse,Rat
Immunogen Description	Recombinant fusion protein of human LINS1 (NP_001035706.1).
Other Names	LINS1; LINS; MRT27; WINS1; lines homolog 1
Accession No.	Swiss-Prot#:Q8NG48NCBI Gene ID:55180
Uniprot	Q8NG48
GeneID	55180;
Calculated MW	50kDa
Formulation	Avoid freeze / thaw cycles. Buffer: PBS with 50% glycerol, pH7.4.
Storage	Store at -20°C

## Application Details

WB 1:200 - 1:2000

## Images



Western blot analysis of extracts of various cell lines, using LINS1 at 1:1000 dilution.

## Background

The Drosophila segment polarity gene *lin* encodes a protein, *lines*, which plays important roles in development of the epidermis and hindgut. This gene encodes a protein containing a *lines*-like domain. This gene is located on chromosome 15 and clustered with the gene encoding ankyrin repeat and SOCS box-containing protein 7. Alternative splicing results in multiple transcript variants.

---

Note: This product is for in vitro research use only