

OGDHL Polyclonal Antibody

Catalog No: #28987



Package Size: #28987-1 50ul #28987-2 100ul

Orders: order@signalwayantibody.com
Support: tech@signalwayantibody.com

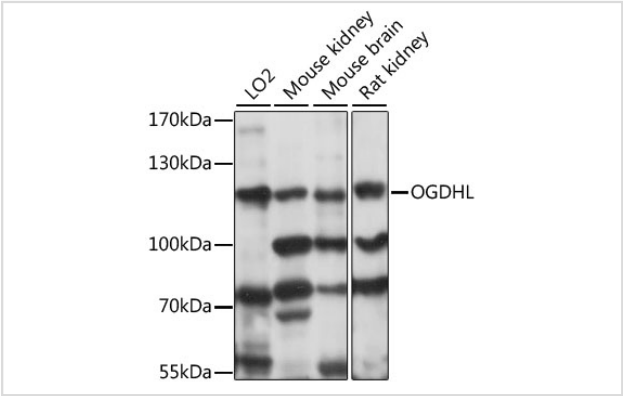
Description

Product Name	OGDHL Polyclonal Antibody
Host Species	Rabbit
Clonality	Polyclonal
Isotype	IgG
Purification	Affinity purification
Applications	WB,IHC
Species Reactivity	Human,Mouse,Rat
Immunogen Description	Recombinant fusion protein of human OGDHL (NP_060715.2).
Other Names	OGDHL
Accession No.	Uniprot:Q9ULD0GeneID:55753
Uniprot	Q9ULD0
GeneID	55753
Calculated MW	120kDa
SDS-PAGE MW	120kDa
Formulation	PBS with 0.02% sodium azide,50% glycerol,pH7.3.
Storage	Store at -20°C. Avoid freeze / thaw cycles.

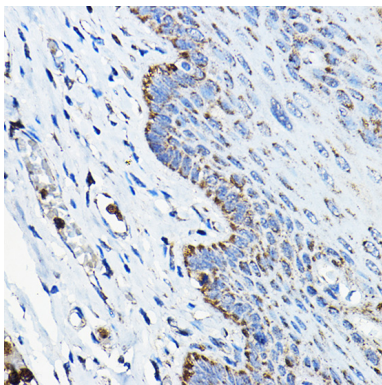
Application Details

WB 1:200 - 1:2000IHC 1:50 - 1:200

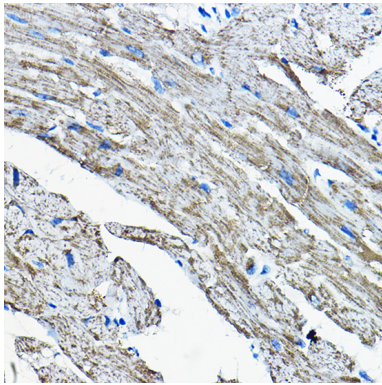
Images



Western blot analysis of extracts of various cell lines, using OGDHL antibody.



Immunohistochemistry of paraffin-embedded human esophageal using OGDHL Rabbit pAb.



Immunohistochemistry of paraffin-embedded mouse heart using OGDHL Rabbit pAb.

Background

The protein encoded by this gene is similar to oxoglutarate dehydrogenase (OGDH) of the OGDH complex, which degrades glucose and glutamate. This gene encodes several isoforms, including some that appear to localize to mitochondria. The encoded protein down-regulates the AKT signaling cascade and can suppress the growth of cervical cancer cells.

Note: This product is for in vitro research use only