

## NKX62 Antibody

Catalog No: #46023

Package Size: #46023-1 50ul #46023-2 100ul

Orders: [order@signalwayantibody.com](mailto:order@signalwayantibody.com)Support: [tech@signalwayantibody.com](mailto:tech@signalwayantibody.com)

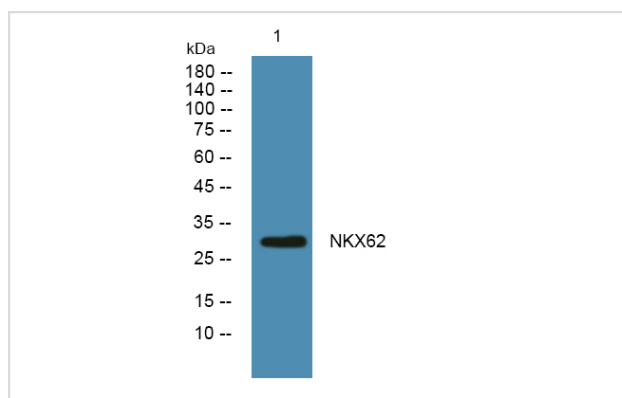
## Description

Product Name	NKX62 Antibody
Host Species	Rabbit
Clonality	Polyclonal
Purification	Immunogen affinity purified
Applications	WB
Species Reactivity	Hu Ms Rt
Specificity	NKX62 Antibody detects endogenous levels of total NKX62
Immunogen Type	Peptide
Immunogen Description	A synthesized peptide derived from human NKX62
Target Name	NKX62
Other Names	NKX6-2, Homeobox 6B, Homeobox protein Nkx-6.2, NKX6B, NK6 homeobox 2, NKX6.2, GTX, NK homeobox family 6, B, NKX6.1
Accession No.	Swiss-Prot#: Q9C056NCBI Gene ID:84504
Uniprot	Q9C056
GeneID	84504;
Calculated MW	29 kDa
Concentration	1.0mg/mL
Formulation	Liquid in PBS containing 50% glycerol, and 0.02% sodium azide.
Storage	Store at -20°C

## Application Details

Western blotting: 1:1000-3000

## Images



Western blot analysis of lysates from K562 cells, primary antibody was diluted at 1:1000, 4o½ over night

---

Note: This product is for in vitro research use only