

# CPNE1 Polyclonal Antibody

Catalog No: #29407



Package Size: #29407-1 50ul #29407-2 100ul

Orders: [order@signalwayantibody.com](mailto:order@signalwayantibody.com)  
Support: [tech@signalwayantibody.com](mailto:tech@signalwayantibody.com)

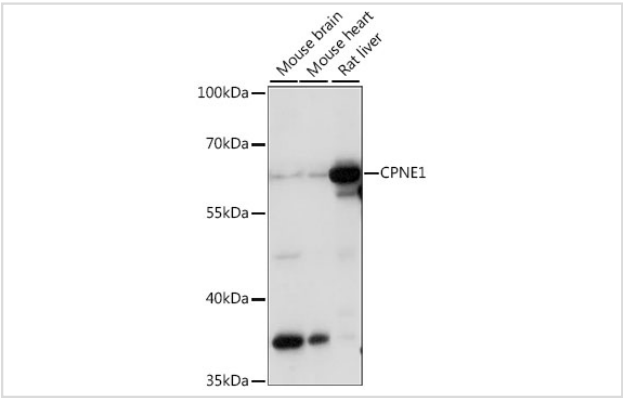
## Description

Product Name	CPNE1 Polyclonal Antibody
Host Species	Rabbit
Clonality	Polyclonal
Isotype	IgG
Purification	Affinity purification
Applications	WB
Species Reactivity	Mouse,Rat
Immunogen Description	Recombinant fusion protein of human CPNE1 (NP_003906.2).
Other Names	CPNE1; COPN1; CPN1; copine-1
Accession No.	Swiss-Prot#:Q99829NCBI Gene ID:8904
Uniprot	Q99829
GeneID	8904;
Calculated MW	65kDa
Formulation	Avoid freeze / thaw cycles. Buffer: PBS with 50% glycerol, pH7.4.
Storage	Store at -20°C

## Application Details

WB 1:500 - 1:2000

## Images



Western blot analysis of extracts of various cell lines, using CPNE1 at 1:1000 dilution.

## Background

Calcium-dependent membrane-binding proteins may regulate molecular events at the interface of the cell membrane and cytoplasm. This gene encodes a calcium-dependent protein that also contains two N-terminal type II C2 domains and an integrin A domain-like sequence in the C-terminus. However, the encoded protein does not contain a predicted signal sequence or transmembrane domains. This protein has a broad tissue distribution and it may function in membrane trafficking. This gene and the gene for RNA binding motif protein 12 overlap at map location 20q11.21. Alternate

splicing results in multiple transcript variants encoding different proteins.

---

Note: This product is for in vitro research use only