

## ERC2 Polyclonal Antibody

Catalog No: #29429

Package Size: #29429-1 50ul #29429-2 100ul

Orders: [order@signalwayantibody.com](mailto:order@signalwayantibody.com)Support: [tech@signalwayantibody.com](mailto:tech@signalwayantibody.com)

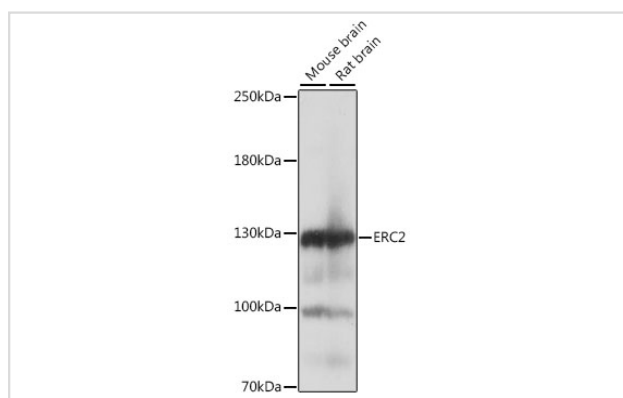
## Description

Product Name	ERC2 Polyclonal Antibody
Host Species	Rabbit
Clonality	Polyclonal
Isotype	IgG
Purification	Affinity purification
Applications	WB,IHC
Species Reactivity	Mouse,Rat
Immunogen Description	Recombinant fusion protein of human ERC2 (NP_056391.1).
Other Names	ERC2; CAST; CAST1; ELKSL; SPBC110; Spc110; ERC protein 2
Accession No.	Swiss-Prot#:O15083NCBI Gene ID:26059
Uniprot	O15083
GeneID	26059;
Calculated MW	120kDa
Formulation	Avoid freeze / thaw cycles. Buffer: PBS with 50% glycerol, pH7.4.
Storage	Store at -20°C

## Application Details

WB□1:500 - 1:2000IHC□1:100 - 1:200

## Images



Western blot analysis of extracts of various cell lines, using ERC2 at 1:1000 dilution.

## Background

This gene encodes a protein that belongs to the Rab3-interacting molecule (RIM)-binding protein family. Members of this protein family form part of the cytomatrix at the active zone (CAZ) complex and function as regulators of neurotransmitter release. Alternative splicing results in multiple transcript variants.

---

Note: This product is for in vitro research use only