

UBE2J1 Polyclonal Antibody

Catalog No: #29449



Package Size: #29449-1 50ul #29449-2 100ul

Orders: order@signalwayantibody.com
Support: tech@signalwayantibody.com

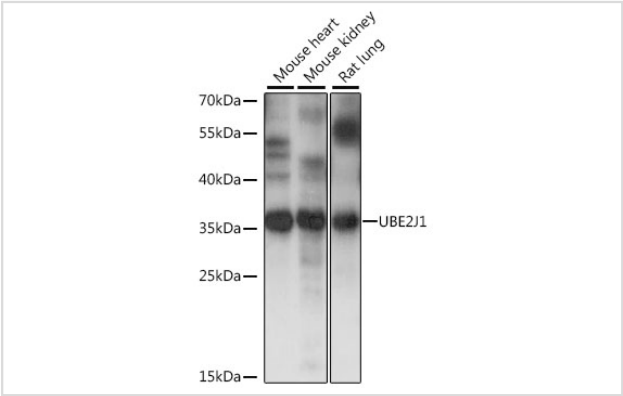
Description

Product Name	UBE2J1 Polyclonal Antibody
Host Species	Rabbit
Clonality	Polyclonal
Isotype	IgG
Purification	Affinity purification
Applications	WB,IF
Species Reactivity	Human,Mouse,Rat
Immunogen Description	A synthetic peptide of human UBE2J1 (NP_057105.2).
Other Names	UBE2J1; CGI-76; HSPC153; HSPC205; HSU93243; NCUBE-1; NCUBE1; UBC6; UBC6E; Ubc6p; ubiquitin-conjugating enzyme E2 J1
Accession No.	Swiss-Prot#:Q9Y385NCBI Gene ID:51465
Uniprot	Q9Y385
GeneID	51465;
Calculated MW	35kDa
Formulation	Avoid freeze / thaw cycles. Buffer: PBS with 50% glycerol, pH7.4.
Storage	Store at -20°C

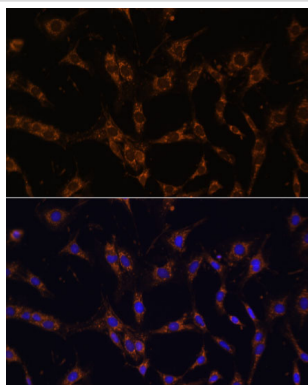
Application Details

WB 1:500 - 1:2000IF 1:50 - 1:200

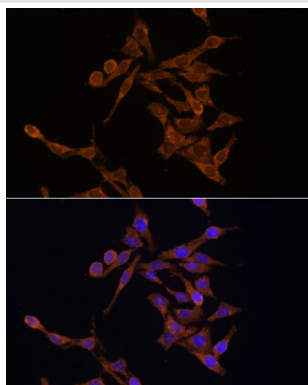
Images



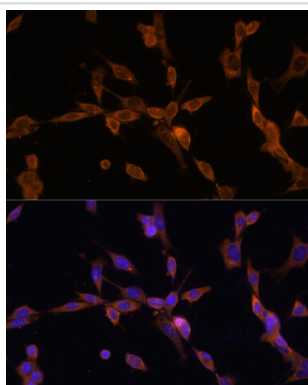
Western blot analysis of extracts of various cell lines, using UBE2J1 at 1:1000 dilution.



Immunofluorescence analysis of C6 cells using UBE2J1 at dilution of 1:100. Blue: DAPI for nuclear staining.



Immunofluorescence analysis of HeLa cells using UBE2J1 at dilution of 1:100. Blue: DAPI for nuclear staining.



Immunofluorescence analysis of NIH/3T3 cells using UBE2J1 at dilution of 1:100. Blue: DAPI for nuclear staining.

Background

The modification of proteins with ubiquitin is an important cellular mechanism for targeting abnormal or short-lived proteins for degradation. Ubiquitination involves at least three classes of enzymes: ubiquitin-activating enzymes, or E1s, ubiquitin-conjugating enzymes, or E2s, and ubiquitin-protein ligases, or E3s. This gene encodes a member of the E2 ubiquitin-conjugating enzyme family. This enzyme is located in the membrane of the endoplasmic reticulum (ER) and may contribute to quality control ER-associated degradation by the ubiquitin-proteasome system.

Note: This product is for in vitro research use only