

CEP85 Polyclonal Antibody

Catalog No: #29475

Package Size: #29475-1 50ul #29475-2 100ul

Orders: order@signalwayantibody.com

Support: tech@signalwayantibody.com

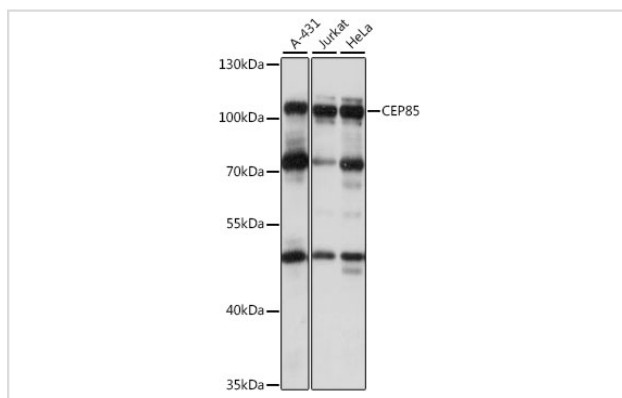
Description

Product Name	CEP85 Polyclonal Antibody
Host Species	Rabbit
Clonality	Polyclonal
Isotype	IgG
Purification	Affinity purification
Applications	WB,IF
Species Reactivity	Human,Mouse,Rat
Immunogen Description	Recombinant fusion protein of human CEP85 (NP_073615.2).
Other Names	CEP85; CCDC21; centrosomal protein 85
Accession No.	Swiss-Prot#:Q6P2H3NCBI Gene ID:64793
Uniprot	Q6P2H3
GeneID	64793;
Calculated MW	105kDa
Formulation	Avoid freeze / thaw cycles. Buffer: PBS with 50% glycerol, pH7.4.
Storage	Store at -20°C

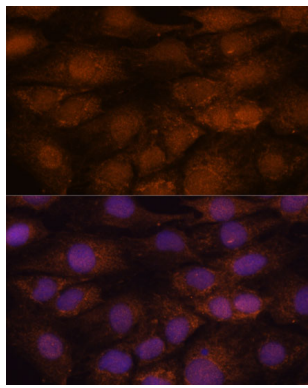
Application Details

WB □ 1:500 - 1:2000 IF □ 1:50 - 1:200

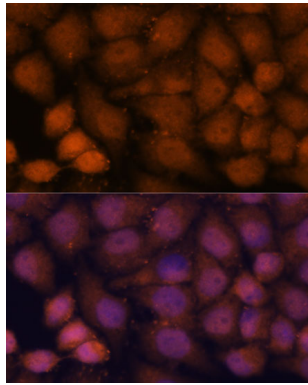
Images



Western blot analysis of extracts of various cell lines, using CEP85 at 1:1000 dilution.



Immunofluorescence analysis of C6 cells using CEP85 at dilution of 1:100. Blue: DAPI for nuclear staining.



Immunofluorescence analysis of HeLa cells using CEP85 at dilution of 1:100. Blue: DAPI for nuclear staining.

Background

This gene encodes a protein that belongs to the centrosome-associated family of proteins. The centrosome is a subcellular organelle in the animal cell that functions as a microtubule organizing center and is involved in cell-cycle progression. Alternate splicing results in multiple transcript variants.

Note: This product is for in vitro research use only