

SLC52A3 Polyclonal Antibody

Catalog No: #29500

Package Size: #29500-1 50ul #29500-2 100ul

Orders: order@signalwayantibody.com

Support: tech@signalwayantibody.com

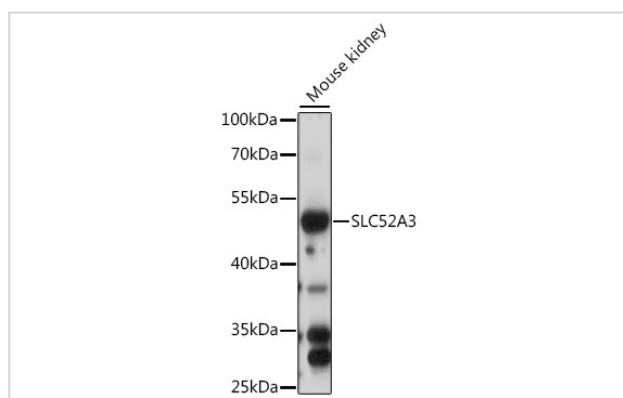
Description

Product Name	SLC52A3 Polyclonal Antibody
Host Species	Rabbit
Clonality	Polyclonal
Isotype	IgG
Purification	Affinity purification
Applications	WB
Species Reactivity	Mouse
Immunogen Description	A synthetic peptide of human SLC52A3 (NP_212134.3).
Other Names	SLC52A3; BVVLS; BVVLS1; C20orf54; RFT2; RFVT3; bA371L19.1; hRFT2; solute carrier family 52 member 3
Accession No.	Swiss-Prot#:Q9NQ40NCBI Gene ID:113278
Uniprot	Q9NQ40
GeneID	113278;
Calculated MW	51kDa
Formulation	Avoid freeze / thaw cycles. Buffer: PBS with 50% glycerol, pH7.4.
Storage	Store at -20°C

Application Details

WB □ 1:500 - 1:2000

Images



Western blot analysis of extracts of mouse kidney, using SLC52A3 at 1:1000 dilution.

Background

This gene encodes a riboflavin transporter protein that is strongly expressed in the intestine and likely plays a role in intestinal absorption of riboflavin. The protein is predicted to have eleven transmembrane domains and a cell surface localization signal in the C-terminus. Mutations at this locus have been associated with Brown-Vialetto-Van Laere syndrome and Fazio-Londe disease.

Note: This product is for in vitro research use only