

SGCZ Polyclonal Antibody

Catalog No: #29515



Package Size: #29515-1 50ul #29515-2 100ul

Orders: order@signalwayantibody.com
Support: tech@signalwayantibody.com

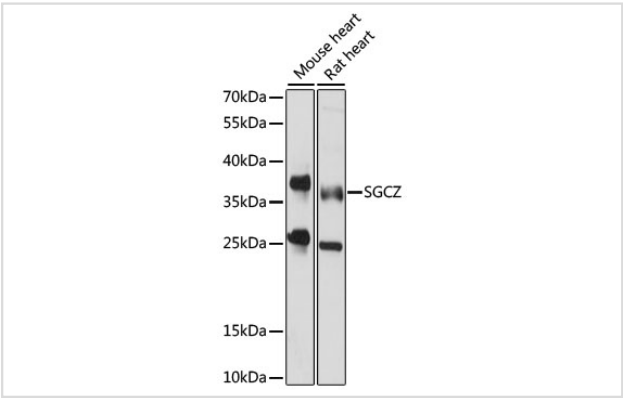
Description

Product Name	SGCZ Polyclonal Antibody
Host Species	Rabbit
Clonality	Polyclonal
Isotype	IgG
Purification	Affinity purification
Applications	WB
Species Reactivity	Mouse,Rat
Immunogen Description	Recombinant fusion protein of human SGCZ (NP_631906.2).
Other Names	SGCZ; ZSG1; zeta-sarcoglycan
Accession No.	Swiss-Prot#:Q96LD1NCBI Gene ID:137868
Uniprot	Q96LD1
GeneID	137868;
Calculated MW	38kDa
Formulation	Avoid freeze / thaw cycles. Buffer: PBS with 50% glycerol, pH7.4.
Storage	Store at -20°C

Application Details

WB 1:500 - 1:2000

Images



Western blot analysis of extracts of various cell lines, using SGCZ at 1000 dilution.

Background

The zeta-sarcoglycan gene measures over 465 kb and localizes to 8p22. This protein is part of the sarcoglycan complex, a group of 6 proteins. The sarcoglycans are all N-glycosylated transmembrane proteins with a short intra-cellular domain, a single transmembrane region and a large extra-cellular domain containing a carboxyl-terminal cluster with several conserved cysteine residues. The sarcoglycan complex is part of the dystrophin-associated glycoprotein complex (DGC), which bridges the inner cytoskeleton and the extra-cellular matrix.

Note: This product is for in vitro research use only