

EBF3 Polyclonal Antibody

Catalog No: #29522



Package Size: #29522-1 50ul #29522-2 100ul

Orders: order@signalwayantibody.com
Support: tech@signalwayantibody.com

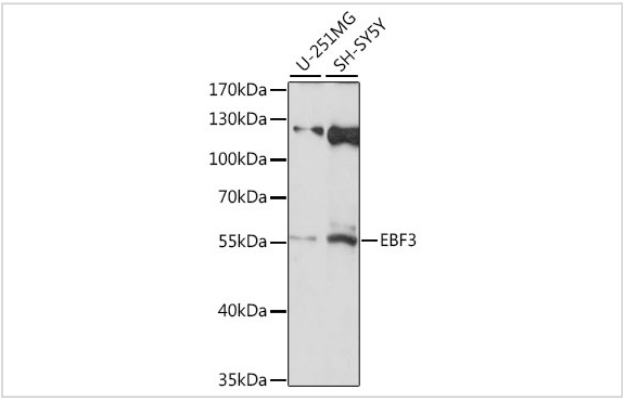
Description

| | |
|-----------------------|---|
| Product Name | EBF3 Polyclonal Antibody |
| Host Species | Rabbit |
| Clonality | Polyclonal |
| Isotype | IgG |
| Purification | Affinity purification |
| Applications | WB |
| Species Reactivity | Human |
| Immunogen Description | A synthetic peptide of human EBF3 (NP_001005463.1). |
| Other Names | EBF3; COE3; EBF-3; HADD5; O/E-2; OE-2; early B-cell factor 3 |
| Accession No. | Swiss-Prot#:Q9H4W6NCBI Gene ID:253738 |
| Uniprot | Q9H4W6 |
| GeneID | 253738; |
| Calculated MW | 58kDa |
| Formulation | Avoid freeze / thaw cycles. Buffer: PBS with 50% glycerol, pH7.4. |
| Storage | Store at -20°C |

Application Details

WB 1:500 - 1:2000

Images



Western blot analysis of extracts of various cell lines, using EBF3 at 1:1000 dilution.

Background

This gene encodes a member of the early B-cell factor (EBF) family of DNA binding transcription factors. EBF proteins are involved in B-cell differentiation, bone development and neurogenesis, and may also function as tumor suppressors. The encoded protein inhibits cell survival through the regulation of genes involved in cell cycle arrest and apoptosis, and aberrant methylation or deletion of this gene may play a role in multiple malignancies including glioblastoma multiforme and gastric carcinoma.

Note: This product is for in vitro research use only