

FBXW2 Polyclonal Antibody

Catalog No: #29532

Package Size: #29532-1 50ul #29532-2 100ul

Orders: order@signalwayantibody.comSupport: tech@signalwayantibody.com

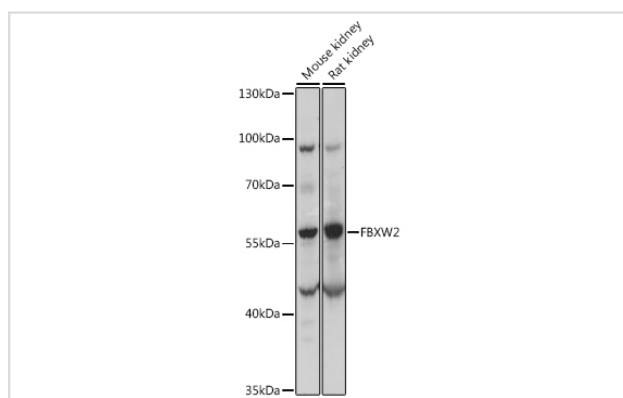
Description

Product Name	FBXW2 Polyclonal Antibody
Host Species	Rabbit
Clonality	Polyclonal
Isotype	IgG
Purification	Affinity purification
Applications	WB
Species Reactivity	Mouse,Rat
Immunogen Description	Recombinant fusion protein of human FBXW2 (NP_036296.2).
Other Names	FBXW2; FBW2; Fwd2; Md6; F-box/WD repeat-containing protein 2
Accession No.	Swiss-Prot#:Q9UKT8NCBI Gene ID:26190
Uniprot	Q9UKT8
GeneID	26190;
Calculated MW	51kDa
Formulation	Avoid freeze / thaw cycles. Buffer: PBS with 50% glycerol, pH7.4.
Storage	Store at -20°C

Application Details

WB 1:500 - 1:2000

Images



Western blot analysis of extracts of various cell lines, using FBXW2 at 1:1000 dilution.

Background

F-box proteins are an expanding family of eukaryotic proteins characterized by an approximately 40 amino acid motif, the F box. Some F-box proteins have been shown to be critical for the ubiquitin-mediated degradation of cellular regulatory proteins. In fact, F-box proteins are one of the four subunits of ubiquitin protein ligases, called SCFs. SCF ligases bring ubiquitin conjugating enzymes to substrates that are specifically recruited by the different F-box proteins. Mammalian F-box proteins are classified into three groups based on the presence of either WD-40 repeats, leucine-rich repeats, or the

presence or absence of other protein-protein interacting domains. This gene encodes the second identified member of the F-box gene family and contains multiple WD-40 repeats.

Note: This product is for in vitro research use only