

# Zip12 Polyclonal Antibody

Catalog No: #29534



Package Size: #29534-1 50ul #29534-2 100ul

Orders: [order@signalwayantibody.com](mailto:order@signalwayantibody.com)  
Support: [tech@signalwayantibody.com](mailto:tech@signalwayantibody.com)

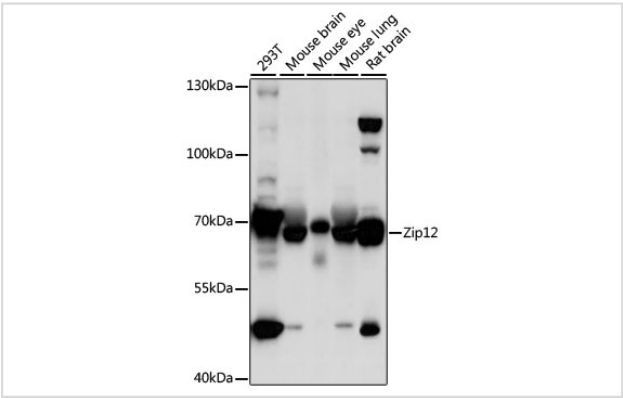
## Description

Product Name	Zip12 Polyclonal Antibody
Host Species	Rabbit
Clonality	Polyclonal
Isotype	IgG
Purification	Affinity purification
Applications	WB,IHC
Species Reactivity	Human,Mouse,Rat
Immunogen Description	A synthetic peptide of human SLC39A12 (NP_001138667.1).
Other Names	SLC39A12; LZT-Hs8; ZIP-12; bA570F3.1; zinc transporter ZIP12
Accession No.	Swiss-Prot#:Q504Y0NCBI Gene ID:221074
Uniprot	Q504Y0
GeneID	221074;
Calculated MW	77kDa
Formulation	Avoid freeze / thaw cycles. Buffer: PBS with 50% glycerol, pH7.4.
Storage	Store at -20°C

## Application Details

WB 1:500 - 1:2000IHC 1:50 - 1:200

## Images



Western blot analysis of extracts of various cell lines, using Zip12 at 1:1000 dilution.

## Background

Zinc is an essential cofactor for hundreds of enzymes. It is involved in protein, nucleic acid, carbohydrate, and lipid metabolism, as well as in the control of gene transcription, growth, development, and differentiation. SLC39A12 belongs to a subfamily of proteins that show structural characteristics of zinc transporters (Taylor and Nicholson, 2003 [PubMed 12659941]).

---

Note: This product is for in vitro research use only