

# MAP3K1 Polyclonal Antibody

Catalog No: #29546



Package Size: #29546-1 50ul #29546-2 100ul

Orders: [order@signalwayantibody.com](mailto:order@signalwayantibody.com)  
Support: [tech@signalwayantibody.com](mailto:tech@signalwayantibody.com)

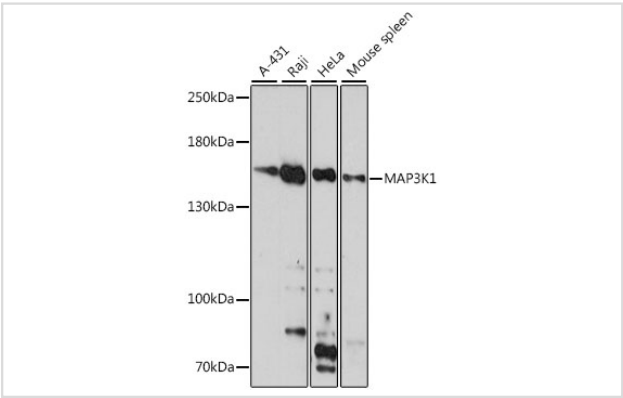
## Description

Product Name	MAP3K1 Polyclonal Antibody
Host Species	Rabbit
Clonality	Polyclonal
Isotype	IgG
Purification	Affinity purification
Applications	WB,IHC,IF
Species Reactivity	Human,Mouse,Rat
Immunogen Description	A synthetic synthetic peptide of human MAP3K1 (NP_005912.1).
Other Names	MAP3K1; MAPKKK1; MEKK; MEKK 1; MEKK1; SRXY6; mitogen-activated protein kinase kinase kinase 1
Accession No.	Swiss-Prot#:Q13233NCBI Gene ID:4214
Uniprot	Q13233
GeneID	4214;
Calculated MW	164kDa
Formulation	Avoid freeze / thaw cycles. Buffer: PBS with 50% glycerol, pH7.4.
Storage	Store at -20°C

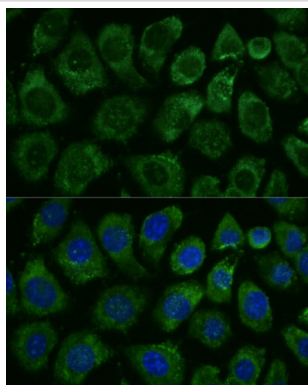
## Application Details

WB 1:500 - 1:2000IHC 1:50 - 1:100IF 1:50 - 1:100

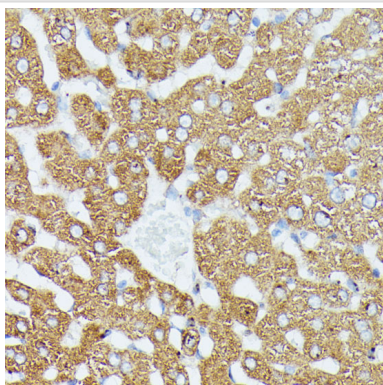
## Images



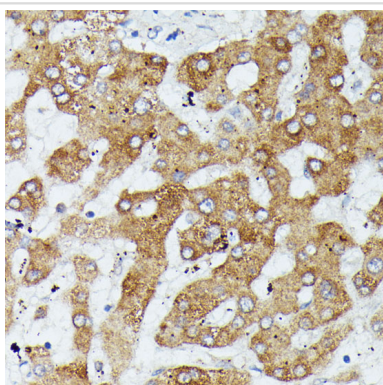
Western blot analysis of extracts of various cell lines, using MAP3K1 at 1:1000 dilution.



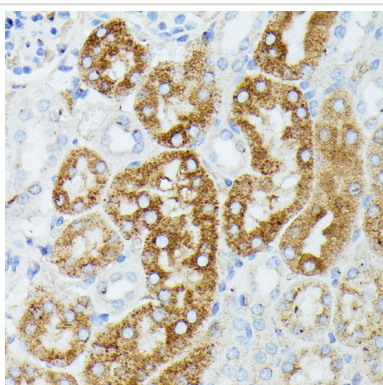
Immunofluorescence analysis of L929 cells using MAP3K1 Polyclonal at dilution of 1:100 (40x lens). Blue: DAPI for nuclear staining.



Immunohistochemistry of paraffin-embedded rat liver using MAP3K1 at dilution of 1:100 (40x lens).



Immunohistochemistry of paraffin-embedded human liver using MAP3K1 at dilution of 1:100 (40x lens).



Immunohistochemistry of paraffin-embedded mouse kidney using MAP3K1 at dilution of 1:100 (40x lens).

## Background

The protein encoded by this gene is a serine/threonine kinase and is part of some signal transduction cascades, including the ERK and JNK kinase pathways as well as the NF-kappa-B pathway. The encoded protein is activated by autophosphorylation and requires magnesium as a cofactor in phosphorylating other proteins. This protein has E3 ligase activity conferred by a plant homeodomain (PHD) in its N-terminus and phospho-kinase activity conferred by a kinase domain in its C-terminus.

---

Note: This product is for in vitro research use only