

RFX1 Polyclonal Antibody

Catalog No: #29704



Package Size: #29704-1 50ul #29704-2 100ul

Orders: order@signalwayantibody.com
Support: tech@signalwayantibody.com

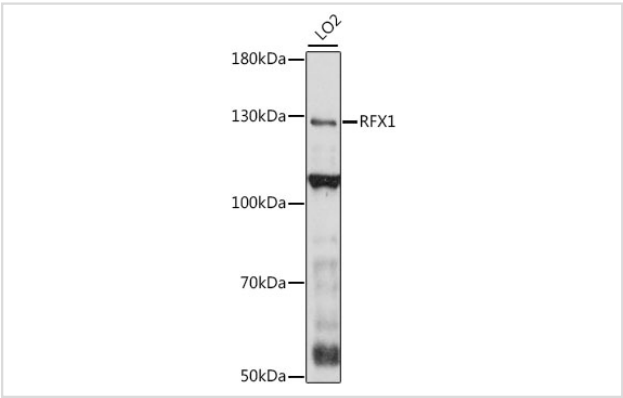
Description

Product Name	RFX1 Polyclonal Antibody
Host Species	Rabbit
Clonality	Polyclonal
Isotype	IgG
Purification	Affinity purification
Applications	WB
Species Reactivity	Human
Immunogen Description	A synthetic peptide of human RFX1 (NP_002909.4).
Other Names	RFX1; EFC; RFX; regulatory factor X1
Accession No.	Swiss-Prot#:P22670NCBI Gene ID:5989
Uniprot	P22670
GeneID	5989;
Calculated MW	130kDa
Formulation	Avoid freeze / thaw cycles. Buffer: PBS with 50% glycerol, pH7.4.
Storage	Store at -20°C

Application Details

WB 1:500 - 1:2000

Images



Western blot analysis of extracts of LO2 cells, using RFX1 at 1:1000 dilution.

Background

This gene encodes a member of the regulatory factor X (RFX) family of transcription factors, which are characterized by a winged-helix DNA-binding domain. The encoded transcription factor contains an N-terminal activation domain and a C-terminal repression domain, and may activate or repress target gene expression depending on cellular context. This transcription factor has been shown to regulate a wide variety of genes involved in immunity and cancer, including the MHC class II genes and genes that may be involved in cancer progression. This gene exhibits altered expression

in glioblastoma and the autoimmune disease systemic lupus erythematosus (SLE).

Note: This product is for in vitro research use only