

SNAPC2 Polyclonal Antibody

Catalog No: #29705



Package Size: #29705-1 50ul #29705-2 100ul

Orders: order@signalwayantibody.com
Support: tech@signalwayantibody.com

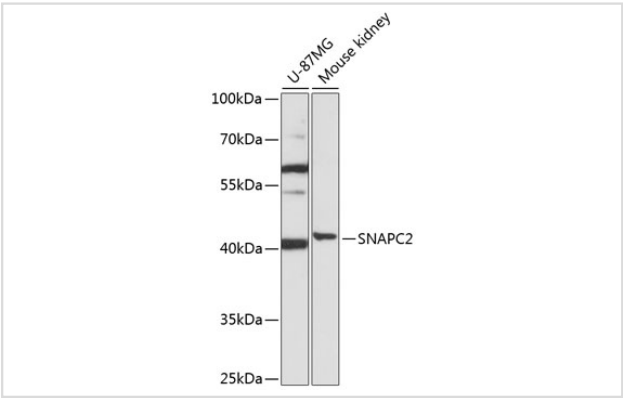
Description

Product Name	SNAPC2 Polyclonal Antibody
Host Species	Rabbit
Clonality	Polyclonal
Isotype	IgG
Purification	Affinity purification
Applications	WB
Species Reactivity	Human,Mouse
Immunogen Description	Recombinant fusion protein of human SNAPC2 (NP_003074.1).
Other Names	SNAPC2; PTFDELTA; SNAP45; snRNA-activating protein complex subunit 2
Accession No.	Swiss-Prot#:Q13487NCBI Gene ID:6618
Uniprot	Q13487
GeneID	6618;
Calculated MW	Refer to figures
Formulation	Avoid freeze / thaw cycles. Buffer: PBS with 50% glycerol, pH7.4.
Storage	Store at -20°C

Application Details

WB 1:500 - 1:2000

Images



Western blot analysis of extracts of various cell lines, using SNAPC2 at 1:1000 dilution.

Background

This gene encodes a subunit of the snRNA-activating protein complex which is associated with the TATA box-binding protein. The encoded protein is necessary for RNA polymerase II and III dependent small-nuclear RNA gene transcription. Alternative splicing results in multiple transcript variants.

Note: This product is for in vitro research use only