

RHBDL1 Polyclonal Antibody

Catalog No: #29716

Package Size: #29716-1 50ul #29716-2 100ul

Orders: order@signalwayantibody.comSupport: tech@signalwayantibody.com

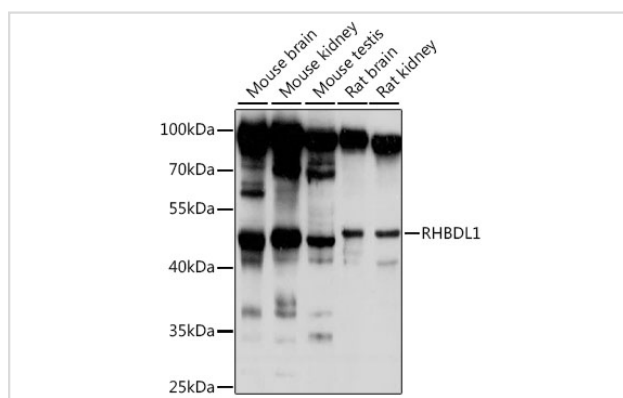
Description

Product Name	RHBDL1 Polyclonal Antibody
Host Species	Rabbit
Clonality	Polyclonal
Isotype	IgG
Purification	Affinity purification
Applications	WB
Species Reactivity	Human,Mouse,Rat
Immunogen Description	Recombinant protein of human RHBDL1
Other Names	RHBDL1; RHBDL; RRP; rhomboid like 1
Accession No.	Swiss-Prot#:O75783NCBI Gene ID:9028
Uniprot	O75783
GeneID	9028;
Calculated MW	48kDa
Formulation	Avoid freeze / thaw cycles. Buffer: PBS with 50% glycerol, pH7.4.
Storage	Store at -20°C

Application Details

WB 1:500 - 1:2000

Images



Western blot analysis of extracts of various cell lines, using RHBDL1 at 1:1000 dilution.

Background

This gene encodes a protein similar to Rhomboid in Drosophila which is involved in signalling in the Spitz/epidermal growth factor receptor/mitogen-activated protein kinase pathway. The Rhomboid family of proteins consists of intramembrane serine proteases containing several transmembrane domains. Alternative splicing results in multiple transcript variants encoding different isoforms.

Note: This product is for in vitro research use only