

SEC24D Polyclonal Antibody

Catalog No: #29721



Package Size: #29721-1 50ul #29721-2 100ul

Orders: order@signalwayantibody.com
Support: tech@signalwayantibody.com

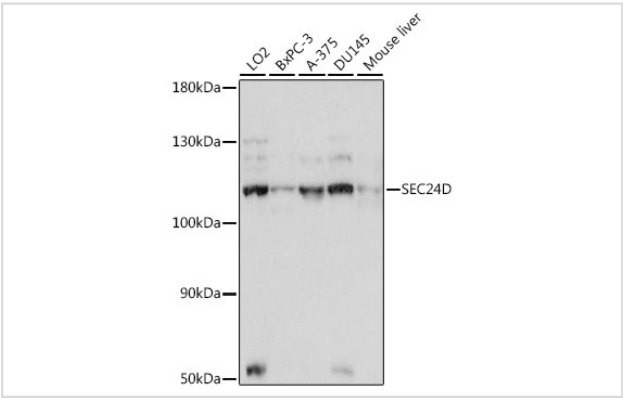
Description

Product Name	SEC24D Polyclonal Antibody
Host Species	Rabbit
Clonality	Polyclonal
Isotype	IgG
Purification	Affinity purification
Applications	WB,IF
Species Reactivity	Human,Mouse,Rat
Immunogen Description	Recombinant fusion protein of human SEC24D (NP_001304995.1).
Other Names	SEC24D; CLCRP2; protein transport protein Sec24D
Accession No.	Swiss-Prot#:O94855NCBI Gene ID:9871
Uniprot	O94855
GeneID	9871;
Calculated MW	113kDa
Formulation	Avoid freeze / thaw cycles. Buffer: PBS with 50% glycerol, pH7.4.
Storage	Store at -20°C

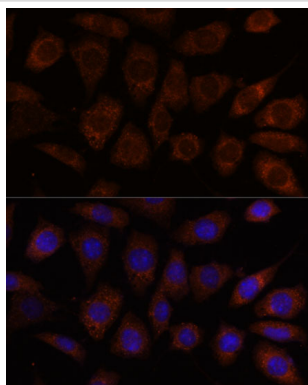
Application Details

WB 1:500 - 1:2000IF 1:50 - 1:200

Images



Western blot analysis of extracts of various cell lines, using SEC24D at 1:1000 dilution.



Immunofluorescence analysis of L929 cells using SEC24D at dilution of 1:100. Blue: DAPI for nuclear staining.

Background

The protein encoded by this gene is a member of the SEC24 subfamily of the SEC23/SEC24 family, which is involved in vesicle trafficking. The encoded protein has similarity to yeast Sec24p component of COPII. COPII is the coat protein complex responsible for vesicle budding from the ER. This gene product is implicated in the shaping of the vesicle, and also in cargo selection and concentration. Mutations in this gene have been associated with Cole-Carpenter syndrome, a disorder affecting bone formation, resulting in craniofacial malformations and bones that break easily. Alternative splicing results in multiple transcript variants encoding different isoforms.

Note: This product is for in vitro research use only