

CTRC Polyclonal Antibody

Catalog No: #29724

Package Size: #29724-1 50ul #29724-2 100ul

Orders: order@signalwayantibody.comSupport: tech@signalwayantibody.com

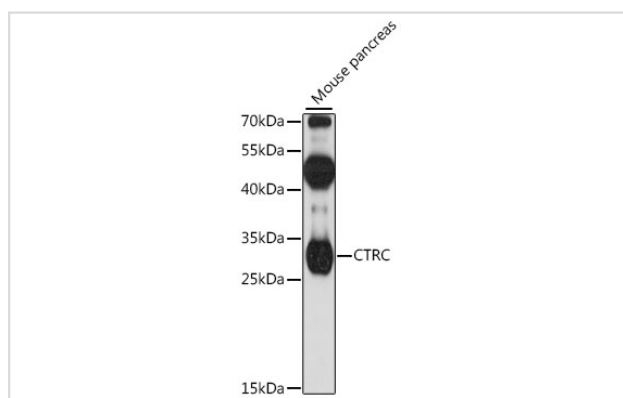
Description

Product Name	CTRC Polyclonal Antibody
Host Species	Rabbit
Clonality	Polyclonal
Isotype	IgG
Purification	Affinity purification
Applications	WB
Species Reactivity	Mouse
Immunogen Description	Recombinant fusion protein of human CTRC (NP_009203.2).
Other Names	CTRC; CLCR; ELA4; chymotrypsin-C
Accession No.	Swiss-Prot#:Q99895NCBI Gene ID:11330
Uniprot	Q99895
GeneID	11330;
Calculated MW	30kDa
Formulation	Avoid freeze / thaw cycles. Buffer: PBS with 50% glycerol, pH7.4.
Storage	Store at -20°C

Application Details

WB 1:500 - 1:2000

Images



Western blot analysis of extracts of mouse pancreas, using CTRC at 1:1000 dilution.

Background

This gene encodes a member of the peptidase S1 family. The encoded protein is a serum calcium-decreasing factor that has chymotrypsin-like protease activity. Alternatively spliced transcript variants have been observed, but their full-length nature has not been determined.

Note: This product is for in vitro research use only