

SLC5A12 Polyclonal Antibody

Catalog No: #29762



Package Size: #29762-1 50ul #29762-2 100ul

Orders: order@signalwayantibody.com
Support: tech@signalwayantibody.com

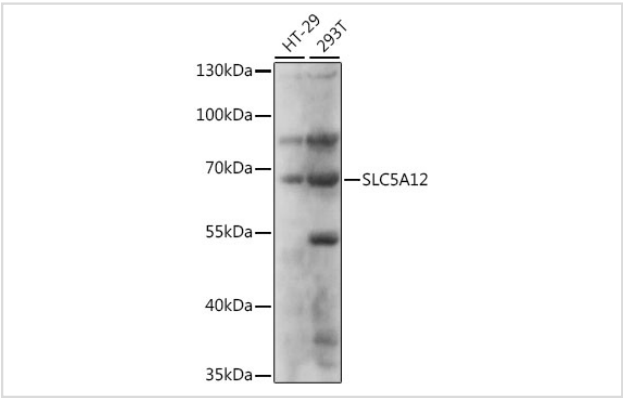
Description

Product Name	SLC5A12 Polyclonal Antibody
Host Species	Rabbit
Clonality	Polyclonal
Isotype	IgG
Purification	Affinity purification
Applications	WB
Species Reactivity	Human
Immunogen Description	Recombinant fusion protein of human SLC5A12 (NP_848593.2).
Other Names	SLC5A12; SMCT2; solute carrier family 5 member 12
Accession No.	Swiss-Prot#:Q1EHB4NCBI Gene ID:159963
Uniprot	Q1EHB4
GeneID	159963;
Calculated MW	67kDa
Formulation	Avoid freeze / thaw cycles. Buffer: PBS with 50% glycerol, pH7.4.
Storage	Store at -20°C

Application Details

WB 1:500 - 1:2000

Images



Western blot analysis of extracts of various cell lines, using SLC5A12 at 1:1000 dilution.

Background

Normal blood lactate is maintained at about 1.5 mM, and little filtered lactate is excreted in urine. Reabsorption of lactate is mediated by the low-affinity Na(+)-coupled lactate transporter SLC5A12 in the initial part of the proximal tubule and by the high-affinity Na(+)-coupled lactate transporter SLC5A8 (MIM 608044) in the distal proximal tubule.

Note: This product is for in vitro research use only