

# KMT5C Polyclonal Antibody

Catalog No: #29787



Package Size: #29787-1 50ul #29787-2 100ul

Orders: [order@signalwayantibody.com](mailto:order@signalwayantibody.com)  
Support: [tech@signalwayantibody.com](mailto:tech@signalwayantibody.com)

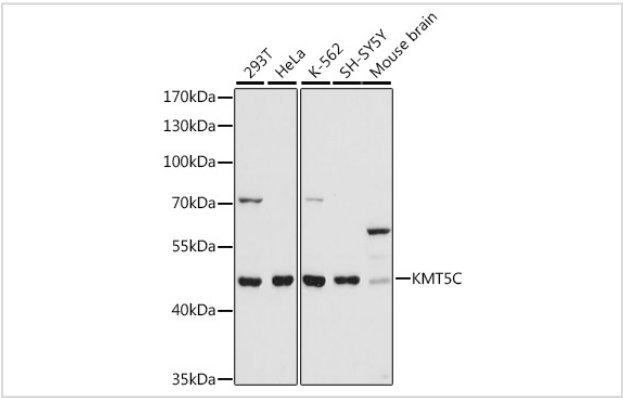
## Description

Product Name	KMT5C Polyclonal Antibody
Host Species	Rabbit
Clonality	Polyclonal
Isotype	IgG
Purification	Affinity purification
Applications	WB
Species Reactivity	Human,Mouse
Immunogen Description	A synthetic peptide of human KMT5C (NP_116090.2).
Other Names	KMT5C; SUV420H2; Suv4-20h2; lysine methyltransferase 5C
Accession No.	Swiss-Prot#:Q86Y97NCBI Gene ID:84787
Uniprot	Q86Y97
GeneID	84787;
Calculated MW	52kDa
Formulation	Avoid freeze / thaw cycles. Buffer: PBS with 50% glycerol, pH7.4.
Storage	Store at -20°C

## Application Details

WB 1:500 - 1:2000

## Images



Western blot analysis of extracts of various cell lines, using KMT5C at 1:1000 dilution.

## Background

SUV420H2 and the related enzyme SUV420H1 (MIM 610881) function as histone methyltransferases that specifically trimethylate nucleosomal histone H4 (see MIM 602822) on lysine-20 (K20).

---

Note: This product is for in vitro research use only