

## SDHD Polyclonal Antibody

Catalog No: #29789

Package Size: #29789-1 50ul #29789-2 100ul

Orders: order@signalwayantibody.com

Support: tech@signalwayantibody.com

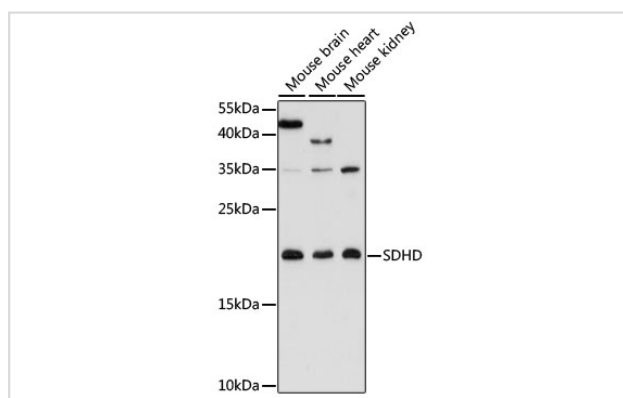
## Description

Product Name	SDHD Polyclonal Antibody
Host Species	Rabbit
Clonality	Polyclonal
Isotype	IgG
Purification	Affinity purification
Applications	WB
Species Reactivity	Human,Mouse,Rat
Immunogen Description	A synthetic peptide of human SDHD (NP_002993.1).
Other Names	SDHD; CBT1; CII-4; CWS3; PGL; PGL1; QPs3; SDH4; cybS; succinate dehydrogenase complex subunit D
Accession No.	Swiss-Prot#:O14521NCBI Gene ID:6392
Uniprot	O14521
GeneID	6392;
Calculated MW	Refer to figures
Formulation	Avoid freeze / thaw cycles. Buffer: PBS with 50% glycerol, pH7.4.
Storage	Store at -20°C

## Application Details

WB 1:500 - 1:2000

## Images



Western blot analysis of extracts of various cell lines, using SDHD at 1:3000 dilution.

## Background

This gene encodes a member of complex II of the respiratory chain, which is responsible for the oxidation of succinate. The encoded protein is one of two integral membrane proteins anchoring the complex to the matrix side of the mitochondrial inner membrane. Mutations in this gene are associated with the formation of tumors, including hereditary paraganglioma. Transmission of disease occurs almost exclusively through the paternal allele, suggesting that this locus may be maternally imprinted. There are pseudogenes for this gene on chromosomes 1, 2, 3, 7, and 18. Alternative splicing

results in multiple transcript variants.

---

Note: This product is for in vitro research use only