

SMPD1 / ASM Polyclonal Antibody

Catalog No: #29790

Package Size: #29790-1 50ul #29790-2 100ul

Orders: order@signalwayantibody.comSupport: tech@signalwayantibody.com

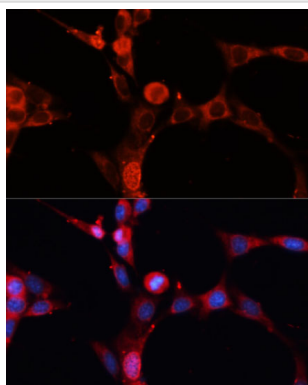
Description

Product Name	SMPD1 / ASM Polyclonal Antibody
Host Species	Rabbit
Clonality	Polyclonal
Isotype	IgG
Purification	Affinity purification
Applications	WB,IF
Species Reactivity	Human,Mouse,Rat
Immunogen Description	Recombinant protein of human SMPD1 / ASM
Other Names	SMPD1; ASM; ASMASE; NPD; sphingomyelin phosphodiesterase
Accession No.	Swiss-Prot#:P17405NCBI Gene ID:6609
Uniprot	P17405
GeneID	6609;
Calculated MW	60kDa
Formulation	Avoid freeze / thaw cycles. Buffer: PBS with 50% glycerol, pH7.4.
Storage	Store at -20°C

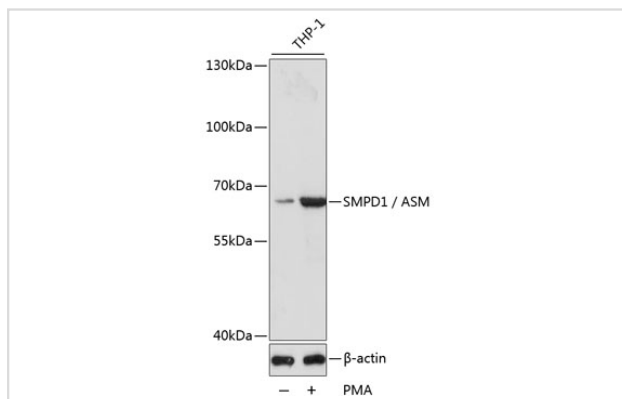
Application Details

WB□1:500 - 1:2000IF□1:50 - 1:100

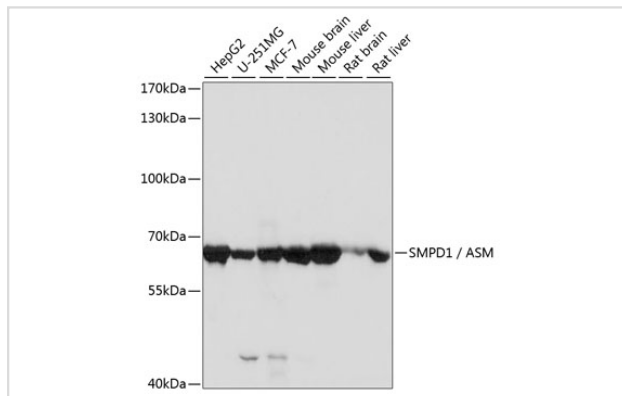
Images



Immunofluorescence analysis of NIH-3T3 cells using SMPD1 / ASM Polyclonal at dilution of 1:100 (40x lens). Blue: DAPI for nuclear staining.



Western blot analysis of extracts of THP-1 cells, using SMPD1 / ASM at 1:1000 dilution. THP-1 cells were treated by PMA (80 nM) for overnight.



Western blot analysis of extracts of various cell lines, using SMPD1 / ASM at 1:1000 dilution.

Background

The protein encoded by this gene is a lysosomal acid sphingomyelinase that converts sphingomyelin to ceramide. The encoded protein also has phospholipase C activity. Defects in this gene are a cause of Niemann-Pick disease type A (NPA) and Niemann-Pick disease type B (NPB). Multiple transcript variants encoding different isoforms have been identified.

Note: This product is for in vitro research use only