

KRT1 Polyclonal Antibody

Catalog No: #29792

Package Size: #29792-1 50ul #29792-2 100ul

Orders: order@signalwayantibody.comSupport: tech@signalwayantibody.com

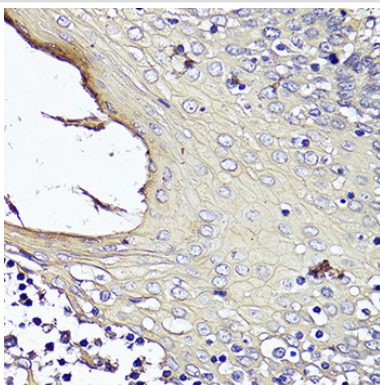
Description

Product Name	KRT1 Polyclonal Antibody
Host Species	Rabbit
Clonality	Polyclonal
Isotype	IgG
Purification	Affinity purification
Applications	IHC,IF
Species Reactivity	Human,Mouse
Immunogen Description	Recombinant fusion protein of human KRT1 (NP_006112.3).
Other Names	KRT1; CK1; EHK; EHK1; EPPK; K1; KRT1A; NEPPK; keratin 1
Accession No.	Swiss-Prot#:P04264NCBI Gene ID:3848
Uniprot	P04264
GeneID	3848;
Formulation	Avoid freeze / thaw cycles. Buffer: PBS with 50% glycerol, pH7.4.
Storage	Store at -20°C

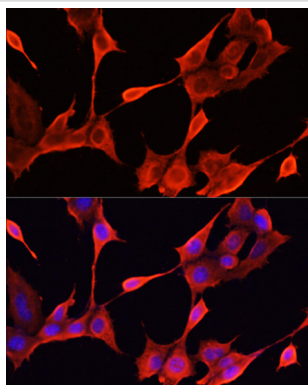
Application Details

IHC□1:50 - 1:200IF□1:50 - 1:200

Images



Immunohistochemistry of paraffin-embedded human tonsil using KRT1 at dilution of 1:100 (40x lens).



Immunofluorescence analysis of NIH/3T3 cells using KRT1 at dilution of 1:100. Blue: DAPI for nuclear staining.

Background

The protein encoded by this gene is a member of the keratin gene family. The type II cytokeratins consist of basic or neutral proteins which are arranged in pairs of heterotypic keratin chains coexpressed during differentiation of simple and stratified epithelial tissues. This type II cytokeratin is specifically expressed in the spinous and granular layers of the epidermis with family member KRT10 and mutations in these genes have been associated with bullous congenital ichthyosiform erythroderma. The type II cytokeratins are clustered in a region of chromosome 12q12-q13.

Note: This product is for in vitro research use only