

INSIG1 Polyclonal Antibody

Catalog No: #29793



Package Size: #29793-1 50ul #29793-2 100ul

Orders: order@signalwayantibody.com
Support: tech@signalwayantibody.com

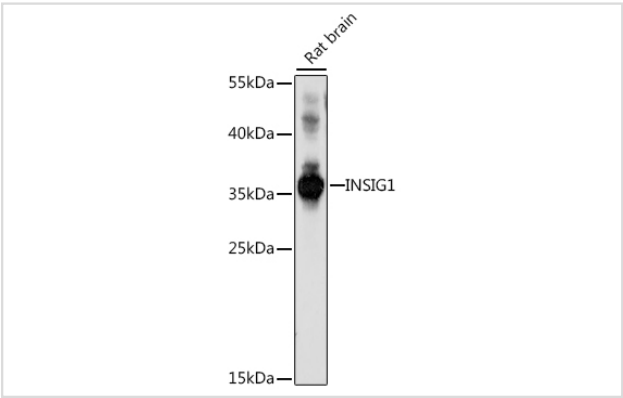
Description

Product Name	INSIG1 Polyclonal Antibody
Host Species	Rabbit
Clonality	Polyclonal
Isotype	IgG
Purification	Affinity purification
Applications	WB
Species Reactivity	Human,Rat
Immunogen Description	A synthetic synthetic peptide of human INSIG1 (NP_005533.2).
Other Names	INSIG1; CL6; insulin induced gene 1
Accession No.	Swiss-Prot#:O15503NCBI Gene ID:3638
Uniprot	O15503
GeneID	3638;
Calculated MW	32kDa
Formulation	Avoid freeze / thaw cycles. Buffer: PBS with 50% glycerol, pH7.4.
Storage	Store at -20°C

Application Details

WB 1:500 - 1:2000

Images



Western blot analysis of extracts of rat brain, using INSIG1 at 1:1000 dilution.

Background

This gene encodes an endoplasmic reticulum membrane protein that regulates cholesterol metabolism, lipogenesis, and glucose homeostasis. The encoded protein has six transmembrane helices which contain an effector protein binding site. It binds the sterol-sensing domains of sterol regulatory element-binding protein (SREBP) cleavage-activating protein (SCAP) and 3-hydroxy-3-methylglutaryl-coenzyme A reductase (HMG-CoA reductase), and is essential for the sterol-mediated trafficking of these two proteins. It promotes the endoplasmic reticulum retention of SCAP and the

ubiquitin-mediated degradation of HMG-CoA reductase. Alternative splicing results in multiple transcript variants.

Note: This product is for in vitro research use only