

SON Polyclonal Antibody

Catalog No: #29807



Package Size: #29807-1 50ul #29807-2 100ul

Orders: order@signalwayantibody.com
Support: tech@signalwayantibody.com

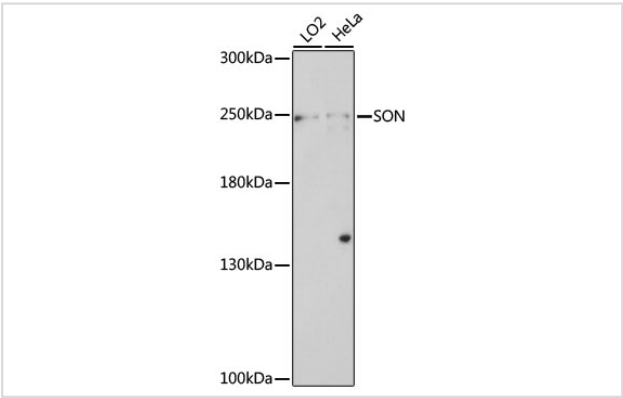
Description

Product Name	SON Polyclonal Antibody
Host Species	Rabbit
Clonality	Polyclonal
Isotype	IgG
Purification	Affinity purification
Applications	WB
Species Reactivity	Human
Immunogen Description	A synthetic peptide of human SON (NP_001278340.1).
Other Names	SON; BASS1; C21orf50; DBP-5; NREBP; SON3; TOKIMS; protein SON
Accession No.	Swiss-Prot#:P18583NCBI Gene ID:6651
Uniprot	P18583
GeneID	6651;
Calculated MW	250kDa
Formulation	Avoid freeze / thaw cycles. Buffer: PBS with 50% glycerol, pH7.4.
Storage	Store at -20°C

Application Details

WB 1:500 - 1:2000

Images



Western blot analysis of extracts of various cell lines, using SON at 1:1000 dilution.

Background

This gene encodes a protein that contains multiple simple repeats. The encoded protein binds RNA and promotes pre-mRNA splicing, particularly of transcripts with poor splice sites. The protein also recognizes a specific DNA sequence found in the human hepatitis B virus (HBV) and represses HBV core promoter activity. There is a pseudogene for this gene on chromosome 1. Alternative splicing results in multiple transcript variants.

Note: This product is for in vitro research use only