

ARAF Polyclonal Antibody

Catalog No: #29814

Package Size: #29814-1 50ul #29814-2 100ul

Orders: order@signalwayantibody.comSupport: tech@signalwayantibody.com

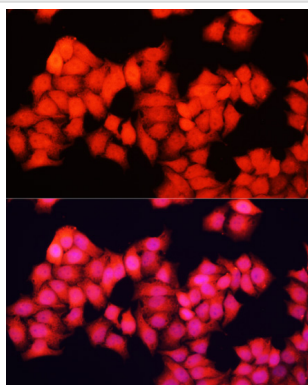
Description

| | |
|-----------------------|--|
| Product Name | ARAF Polyclonal Antibody |
| Host Species | Rabbit |
| Clonality | Polyclonal |
| Isotype | IgG |
| Purification | Affinity purification |
| Applications | WB,IF |
| Species Reactivity | Human,Mouse,Rat |
| Immunogen Description | Recombinant fusion protein of human ARAF (NP_001645.1). |
| Other Names | ARAF; A-RAF; ARAF1; PKS2; RAFA1; serine/threonine-protein kinase A-Raf |
| Accession No. | Swiss-Prot#:P10398NCBI Gene ID:369 |
| Uniprot | P10398 |
| GeneID | 369; |
| Calculated MW | Refer to figures |
| Formulation | Avoid freeze / thaw cycles. Buffer: PBS with 50% glycerol, pH7.4. |
| Storage | Store at -20°C |

Application Details

WB□1:500 - 1:2000IF□1:50 - 1:200

Images



Immunofluorescence analysis of HeLa cells using ARAF at dilution of 1:100. Blue: DAPI for nuclear staining.

Background

This proto-oncogene belongs to the RAF subfamily of the Ser/Thr protein kinase family, and maybe involved in cell growth and development. Alternatively spliced transcript variants encoding different isoforms have been found for this gene.

Note: This product is for in vitro research use only