

ENO3 Polyclonal Antibody

Catalog No: #29822



Package Size: #29822-1 50ul #29822-2 100ul

Orders: order@signalwayantibody.com
Support: tech@signalwayantibody.com

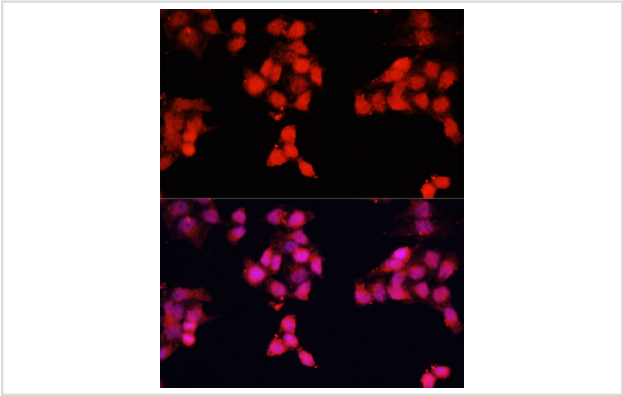
Description

Product Name	ENO3 Polyclonal Antibody
Host Species	Rabbit
Clonality	Polyclonal
Isotype	IgG
Purification	Affinity purification
Applications	WB,IF
Species Reactivity	Human,Mouse,Rat
Immunogen Description	Recombinant fusion protein of human ENO3 (NP_001967.3).
Other Names	ENO3; GSD13; MSE; enolase 3
Accession No.	Swiss-Prot#:P13929NCBI Gene ID:2027
Uniprot	P13929
GeneID	2027;
Calculated MW	Refer to figures
Formulation	Avoid freeze / thaw cycles. Buffer: PBS with 50% glycerol, pH7.4.
Storage	Store at -20°C

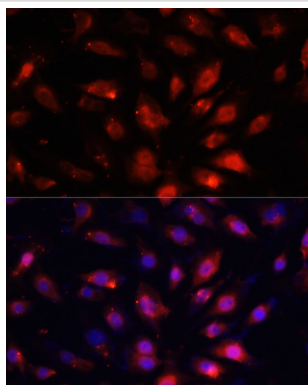
Application Details

WB 1:500 - 1:2000IF 1:50 - 1:200

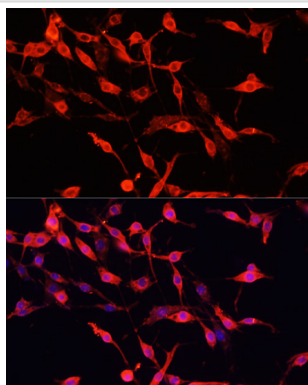
Images



Immunofluorescence analysis of HeLa cells using ENO3 at dilution of 1:100. Blue: DAPI for nuclear staining.



Immunofluorescence analysis of NIH/3T3 cells using ENO3 at dilution of 1:100. Blue: DAPI for nuclear staining.



Immunofluorescence analysis of PC-12 cells using ENO3 at dilution of 1:100. Blue: DAPI for nuclear staining.

Background

This gene encodes one of the three enolase isoenzymes found in mammals. This isoenzyme is found in skeletal muscle cells in the adult where it may play a role in muscle development and regeneration. A switch from alpha enolase to beta enolase occurs in muscle tissue during development in rodents. Mutations in this gene have been associated with glycogen storage disease. Alternatively spliced transcript variants encoding different isoforms have been described.

Note: This product is for in vitro research use only