

IMPG1 Polyclonal Antibody

Catalog No: #29828

Package Size: #29828-1 50ul #29828-2 100ul

Orders: order@signalwayantibody.comSupport: tech@signalwayantibody.com

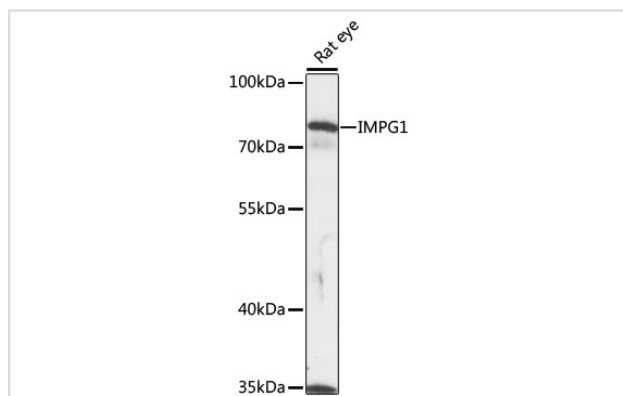
Description

Product Name	IMPG1 Polyclonal Antibody
Host Species	Rabbit
Clonality	Polyclonal
Isotype	IgG
Purification	Affinity purification
Applications	WB,IHC
Species Reactivity	Rat
Immunogen Description	Recombinant fusion protein of human IMPG1 (NP_001554.2).
Other Names	IMPG1; GP147; IPM150; SPACR; VMD4; interphotoreceptor matrix proteoglycan 1
Accession No.	Swiss-Prot#:Q17R60NCBI Gene ID:3617
Uniprot	Q17R60
GeneID	3617;
Calculated MW	80kDa
Formulation	Avoid freeze / thaw cycles. Buffer: PBS with 50% glycerol, pH7.4.
Storage	Store at -20°C

Application Details

WB□1:500 - 1:2000IHC□1:100 - 1:200

Images



Western blot analysis of extracts of rat eye, using IMPG1 at 1:1000 dilution.

Background

This gene encodes a protein that is a major component of the retinal interphotoreceptor matrix. The encoded protein is a proteoglycan that is thought to play a role in maintaining viability of photoreceptor cells and in adhesion of the neural retina to the retinal pigment epithelium. Alternate splicing results in multiple transcript variants.

Note: This product is for in vitro research use only